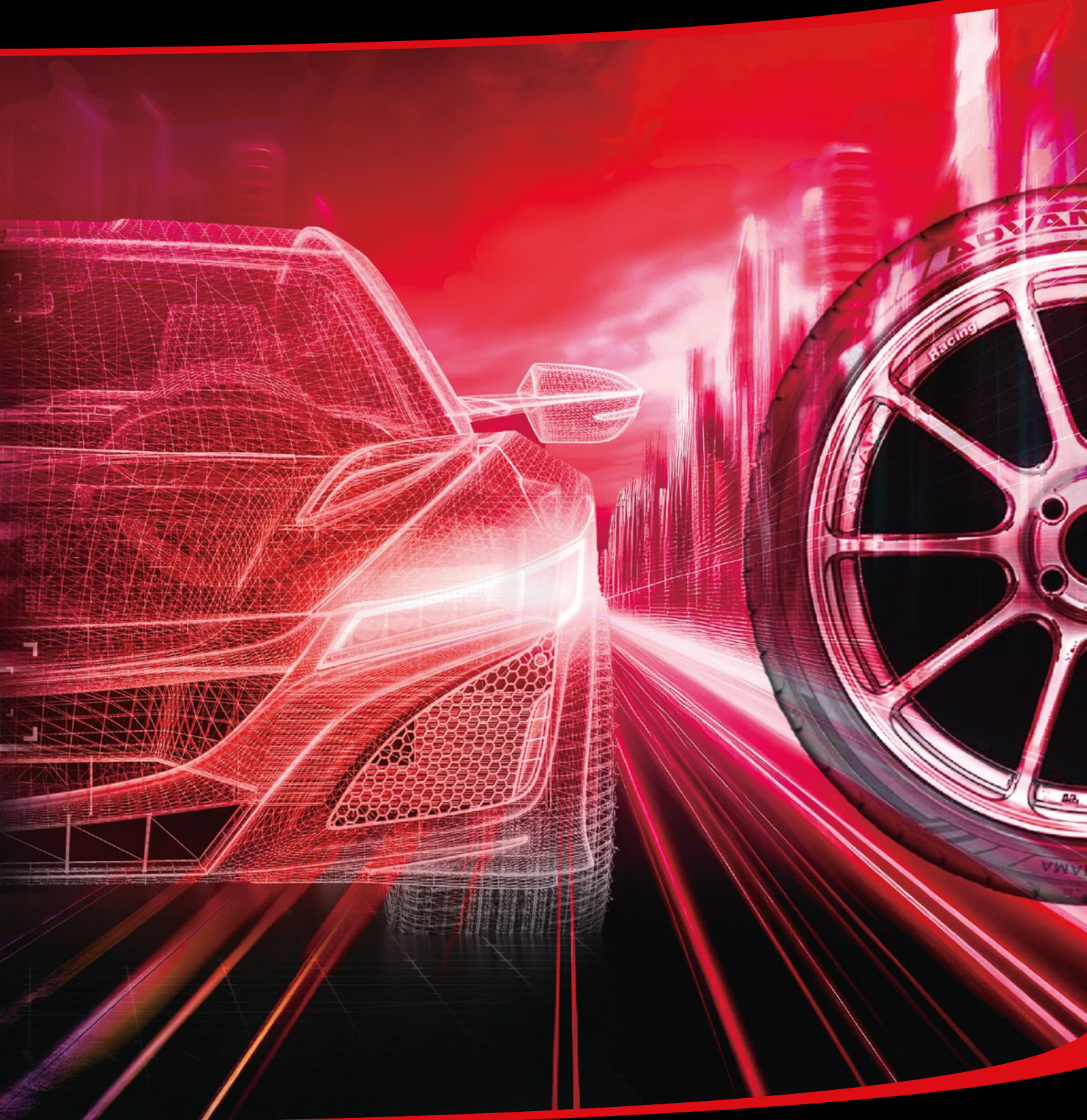




SUMMER TYRE CATALOGUE 2025

► PCR / SUV / LIGHT COMMERCIAL VEHICLES + ALL SEASON



This is YOKOHAMA

The Global Tyre Brand since 1917

The YOKOHAMA Rubber Group is composed of the YOKOHAMA Rubber Co., Ltd. and 143 consolidated subsidiaries, 8 unconsolidated subsidiaries and 36 affiliates around the world.

Original Equipment

YOKOHAMA tyres have been adopted worldwide by car manufacturers with a global reputation and in a wide range of vehicle categories, being the Tyre supplier for premium cars.



The BluEarth Concept

BluEarth. The Product Engineering Philosophy, which focuses on the idea of responsibility towards the Environment and Society constantly.



Our Philosophy, to keep the focus on the responsibility towards the Environment and Society.

The E+ Concept

By displaying the E+ mark, we clearly indicate to customers which products are compatible with electric vehicles so that they are able to choose the right tyre.



The Mark of YOKOHAMA
EV Tyres

Truly Global & Environmental

As a responsible acting company, taking care of our planet is part of the overall YOKOHAMA philosophy.



YOKOHAMA High Performance Tyres

Summer Tyres

Speed

ADVAN A052

ADVAN Sport V107

E+

ADVAN Sport EV

ADVAN NEOVA A009

ADVAN FLEVA V701

ADVAN dB V552

BluEarth-GT AE51

BluEarth-Es ES32

Sport

Comfort

SUV Tyres

On-road

ADVAN Sport V107

GEOLANDAR X-CV

GEOLANDAR H/T G056

GEOLANDAR CV G058

BluEarth-XT AE61

Sport

Comfort

New

GEOLANDAR A/T4

GEOLANDAR X-AT

GEOLANDAR M/T G003

GEOLANDAR X-MT

Off-road

All Season Tyres

Van

BluEarth-Van All Season RY61

SUV, Pickup Truck

GEOLANDAR CV45

Passenger Cars
(Sedan, Hatchback, Mini-van)

BluEarth-4S AW21

Crossover SUV,
Performance Crossover SUV

The availability of products and the special size range offered can vary from country to country.

For detailed Information about the available products and sizes offered in your country, the EU Tyre Label, tyre labeling data and further technical data, please see the corresponding sections in this catalogue or price list respectively or contact your local distributor or dealer. For basic information, you can also refer to the YOKOHAMA website www.yokohama.eu (not for country specific product and size availability).

The EVolved Premium Tyre

ADVAN Sport EV



ADVAN
Sport V107



ADVAN
Sport V105



ADVAN
dB V552



ADVAN
FLEVA V701

ADVAN *Sport EV*

 **YOKOHAMA**

For information about the EU Tyre Label, tyre labelling data and further technical details, see the corresponding sections inside this catalogue or price list respectively. You can also refer to the YOKOHAMA website www.yokohama.eu (not for country specific product and size availability).

High performance summer tyre exclusive for EV



V108

Please see table section for available sizes.

ADVAN Sport EV

E+

The Mark of YOKOHAMA
EV Tyres

SILENTFOAM

Renewable Energy supports
the production of this tyre.

EU Label Range

Fuel Efficiency Class	B – C
Wet Grip Class	A – B
External Rolling Noise Class	A – B
and Measured Value (dB)	67 – 71
Series: 55 % – 35 %	Inches: 18 – 22

These values are for the full size range of this product. The special size range offered can vary from country to country.

For detailed information on the sizes offered and the relevant parameters in your country, please refer to the table section.

Application: Electric Sedan and SUV

Benefits

- Focus on Electrical range/consumption
- Comfortable ride experience
- Enjoy your drive with a tyre, that was designed with a focus on quietness

Features

- Silent foam, aiming to reduce road noise dramatically
- Proven V107 Pattern Design
- A Special tread compound which was originally developed for premium OE, contributes to extended cruise range

Exclusively designed polyurethane foam

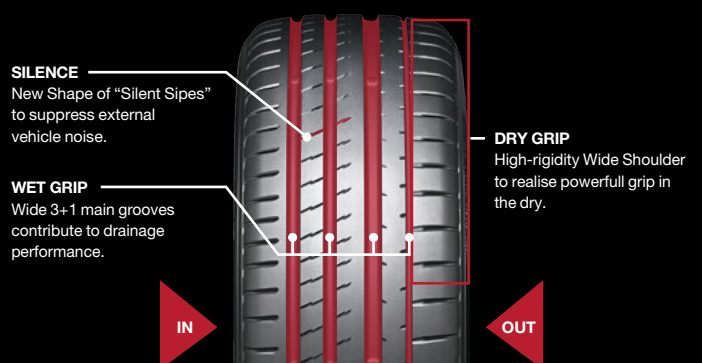


SILENTFOAM

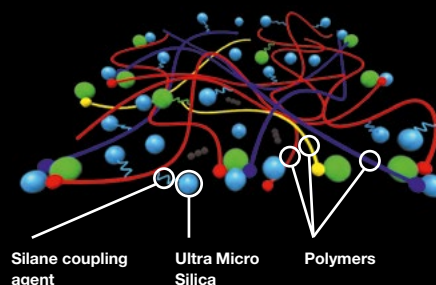
Exclusively designed polyurethane foam reduces cavity noise* which comes from uneven road surfaces and bumps. This gives a comfortable in-vehicle experience and suppresses noise outside the vehicle.

* The noise, which is transmitted from the wheel rims to the interior of the Car

V107 proven and reliable Pattern Design



ADVAN EV Compound



- **Electricity consumption**
Consumption performance is achieved by uniformly blending Silica with a Silica dispersant.

- **Wet performance**
The polymer blend and Silica content focus on rolling resistance and wet performance.



GO BEYOND YOURSELF

ADVAN
NEDVA
AD09

For information about the EU Tyre Label, tyre labelling data and further technical details, see the corresponding sections inside this catalogue or price list respectively. You can also refer to the YOKOHAMA website www.yokohama.eu (not for country specific product and size availability).

 **YOKOHAMA**

The Street Tyre for custom-tuned cars



ADVAN
NEOVA
AD09

EU Label Range

Fuel Efficiency Class	D
Wet Grip Class	A
External Rolling Noise Class and Measured Value (dB)	B 70-75
Series: 50 % - 30 %	Inches: 17 - 21

These values are for the full size range of this product. The special size range offered can vary from country to country.
For detailed information on the sizes offered and the relevant parameters in your country, please refer to the table section.

IMPORTANT CARE AND USAGE INSTRUCTIONS FOR ADVAN NEOVA AD09:

This tyre was developed using high performance compounds which become brittle at low temperatures, and therefore should not be used in certain conditions. The tyre thus must be stored or used only at temperatures at or above 14° F (minus 10° C) to maintain performance characteristics and to avoid any damage to the tyres or injury to persons or property.

Please see table section for available sizes.

Application: Club racers, Sport cars, Tuning cars

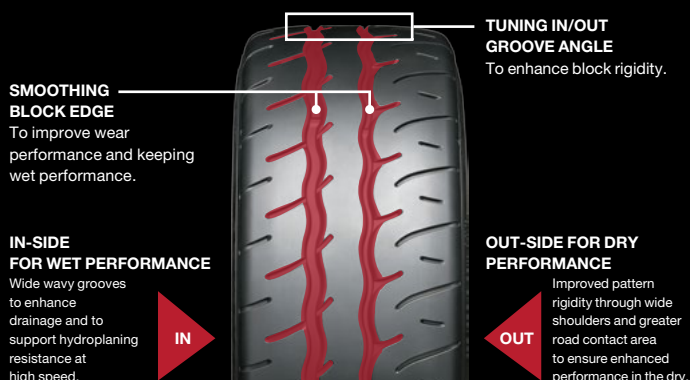
Benefits

- Dry performance, solid dry grip
- Controllability
- Long lasting circuit wear
- Cool, unique, original NEOVA design

Features

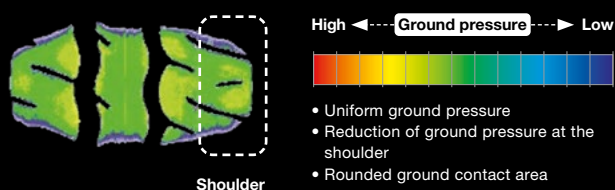
- Asymmetric tread pattern
- Casing rigidity
- Modern-looking side design

The Tread Pattern exclusively for AD09



Control and grip in cornering

Shape of Ground Contact Area



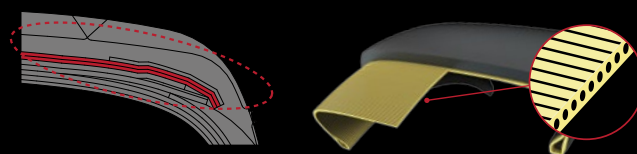
Shoulder



The load is concentrated on the outside ribs when cornering, so it is important to disperse the load. YOKOHAMA technology is aiming for load dispersion, tyre control and tyre life at the same time.

When cornering

Casing rigidity



Belt rigidity is achieved by two layers in the center part and three layers in the shoulder part.

In the carcass cross-section thickness and a high number of cords support the rigidity.



For information about the EU Tyre Label, tyre labelling data and further technical details, see the corresponding sections inside this catalogue or price list respectively. You can also refer to the YOKOHAMA website www.yokohama.eu (not for country specific product and size availability).

Sporty performance with premium comfort and design

ADVAN Sport V107



V107

Please see table section for available sizes.

OE

Original
Equipment

EU Label Range

Fuel Efficiency Class	A-D
Wet Grip Class	A-B
External Rolling Noise Class	A-B
and Measured Value (dB)	67-73
Series: 60 % - 25 %	Inches: 18 - 24

These values are for the full size range of this product, including Passenger Car & Premium SUV Tyres. The special size range offered can vary from country to country.

For detailed information on the sizes offered and the relevant parameters in your country, please refer to the table section.

Application: Ultra-high-performance Sedans & Coupé, EVs and SUVs

Benefits

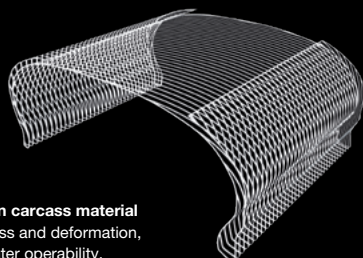
- Ensuring high levels of reactivity, providing precise steering with driving stability when cornering, even at high speed
- Premium touch, stylish dark design effect on the sidewall
- Solid dry grip and wet braking

Features

- Exclusive Tread Pattern
- Improved Mound Profile
- Matrix Body Ply Structure
- Power Crown Belt Cover

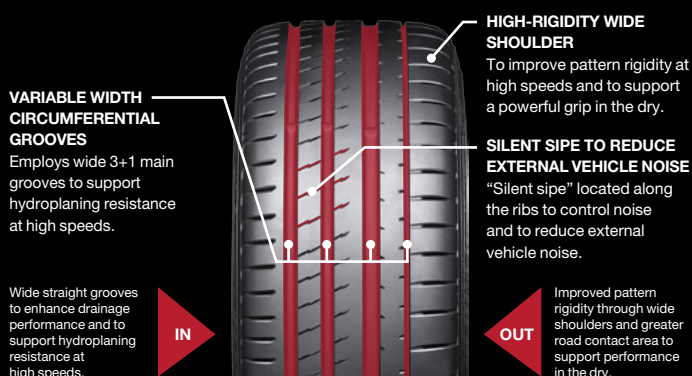
Matrix Body Ply Structure

Steering precision without compromising comfort. Contributes to performance on DRY, conveying power to the road's surface.

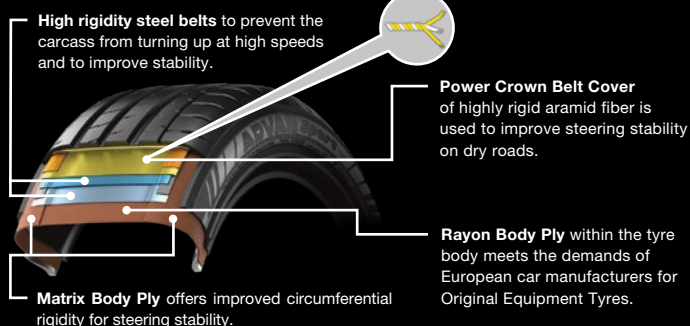


High-rigidity rayon carcass material
Reduces energy loss and deformation, contributes to greater operability.

Cutting Edge Technology: V107 Tread Pattern



The V107 structure



Ultra Sport with Luxury



V105S

Please see table section for available sizes.

ADVAN Sport V105



Depend on sizes

OE

Original
Equipment

EU Label Range

Fuel Efficiency Class	B-D
Wet Grip Class	A-C
External Rolling Noise Class	A-B
and Measured Value (dB)	69-75
Series: 65 % - 25 %	Inches: 16 - 23

These values are for the full size range of this product, including Passenger Car & Premium SUV Tyres. The special size range offered can vary from country to country.

For detailed information on the sizes offered and the relevant parameters in your country, please refer to the table section.

Application: Premium Cars, High performance cars and SUVs

Benefits

- A perfect balance of sport and comfort
- Solid wet grip and stability
- Grip and high stability during cornering
- OE approved quality

Features

- The YOKOHAMA advanced technologies for sport and comfort
- Born through joint developments with premium high performance car manufacturers

Asymmetric Tread Pattern

VARIABLE WIDTH CIRCUMFERENTIAL GROOVES

Employs wide 3+1 Main Grooves to support hydroplaning resistance at high speeds.

SILENT SIPES

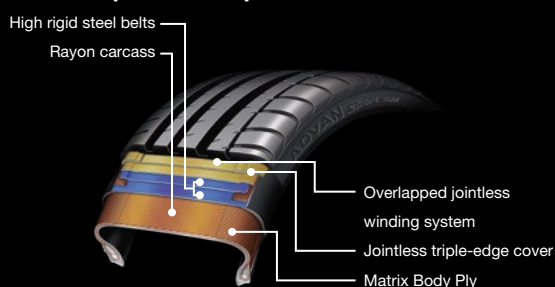
Thin slits, positioned on the inboard of the ribs, to suppress external vehicle noise.



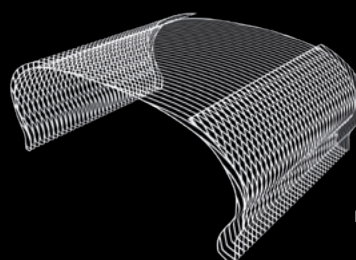
HIGH-RIGIDITY WIDE SHOULDER

To improve pattern rigidity at high speeds and to realise powerful grip on dry surfaces.

ADVAN Sport V105 Special Structure



V105 Matrix Body Ply Construction



Matrix Body Ply Construction

Circumferential rigidity is improved through a double structure, spanning the cover from sidewall to shoulder. The Matrix Body Ply Construction is enhancing the steering precision and supporting the dry grip by maintaining contact with the road surface.

Breathtaking Silence for BEV and PHEV



V552

Please see table section for available sizes.

ADVAN

dB V552

OE

Original
Equipment

EU Label Range

Fuel Efficiency Class	C
Wet Grip Class	A
External Rolling Noise Class and Measured Value (dB)	A-B 67-71
Series: 60%-35%	Inches: 18-21

These values are for the full size range of this product. The special size range offered can vary from country to country.

For detailed information on the sizes offered and the relevant parameters in your country, please refer to the table section.

Application: Middle and large class Saloons, Minivans and SUVs

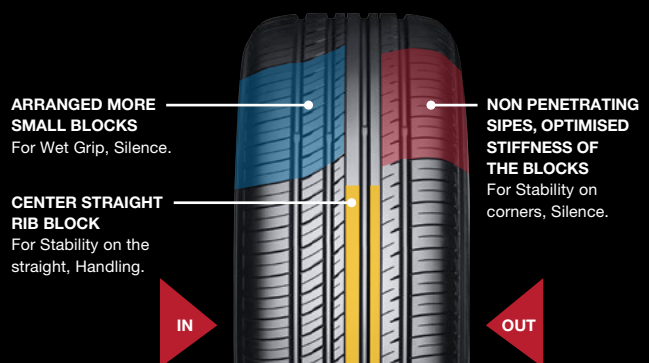
Benefits

- Breathtaking Silence
- Comfortable Ride

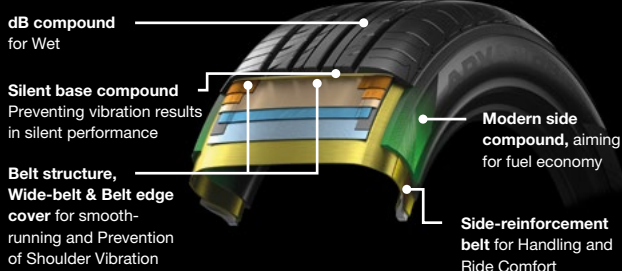
Features

- Sophisticated Small Block Design
- Redesigned Silent Tyre Structure
- Sidewall Profile Shape
- Shoulder Profile Shape

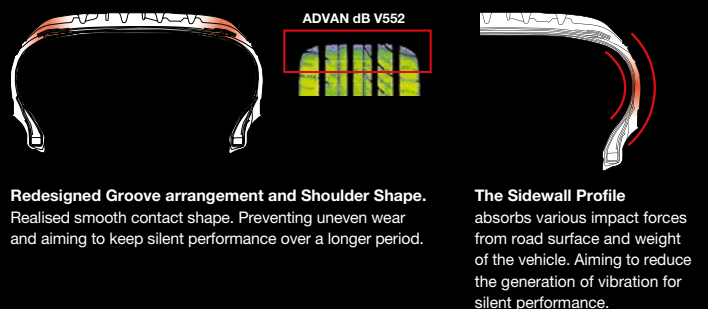
Sophisticated Small Block Design



Redesigned structure for smooth-running



Shoulder and Sidewall Profile Shape



Giving the pleasure to control



V701

Please see table section for available sizes.

ADVAN FLEVA V701

EU Label Range

Fuel Efficiency Class	C–D
Wet Grip Class	A
External Rolling Noise Class	A–B
and Measured Value (dB)	67–72
Series: 55 %–30 %	Inches: 15–20

These values are for the full size range of this product. The special size range offered can vary from country to country. For detailed information on the sizes offered and the relevant parameters in your country, please refer to the table section.

Application: Lightly-Tuned and Sporty cars as well as Standard sedan and compacts

Benefits

- Cool & Attractive Pattern Design
- Emotional Handling
- Sport Tyre with focus on noise reduction

Features

- Optimisation of steering stability and ground contact
- Claw Grooves
- Wide Sword Grooves
- Lightning-shaped Straight Grooves

A direction pattern offers an attractive and aggressive look

THE MAIN GROOVES

Have more edge components through a lightning-shaped design, supporting traction and hydroplaning resistance herewith.

DIRECTIONAL TREAD PATTERN

With more edges facing the road surface, offers an attractive and aggressive look.

THE CLAW GROOVES

Push aside water at corners. The groove design increases effective groove length.

WIDE SWORD GROOVES

The lug grooves have more edge components. The non-penetrating lug groove increases block stiffness for the direct feeling of handling.



2 in 1 contrasting pitch

30 pitch



60 pitch

60 pitch

Increased tread pattern stiffness realises a more direct feeling to handling. Optimised ground contact area. Aim is to enhance ride quietness.

Sporty Tyre with focus on noise reduction



Non-penetrating lug grooves aim to reduce noise. The blocks increase the stiffness to improve the direct handling and to reduce friction.

Street Legal, Track Ready



A052

Please see table section for available sizes.

ADVAN

A052

OE
**Original
Equipment**
EU Label Range

Fuel Efficiency Class	D
Wet Grip Class	A-C
External Rolling Noise Class and Measured Value (dB)	B 69-75
Series: 60% - 30%	Inches: 13-20

These values are for the full size range of this product. The special size range offered can vary from country to country.

For detailed information on the sizes offered and the relevant parameters in your country, please refer to the table section.

Application: Semi-Slick with racing performance

Benefits

- High sport performance on a dry track
- Powerful cornering capability
- The street-legal tyre complies with European standard for rolling resistance

Features

- Asymmetric, high rigidity tread pattern
- Specially developed Sport Compound

High-rigidity Tread Rib



Straight Thin Groove



Two Straight Grooves



Adapted Mound-Profile


IMPORTANT CARE AND USAGE INSTRUCTIONS FOR ADVAN A052 AND ADVAN NEOVA AD08RS:

The tyres were developed using high performance compounds which become brittle at low temperatures, and therefore should not be used in certain conditions. The tyres thus must be stored or used only at temperatures at or above 14°F (minus 10°C) to maintain performance characteristics and to avoid any damage to the tyres or injury to persons or property.

Gripping Performance



AD08RS

Please see table section for available sizes.

ADVAN

NEOVA AD08RS

EU Label Range

Fuel Efficiency Class	D
Wet Grip Class	B
External Rolling Noise Class and Measured Value (dB)	B 70-72
Series: 50% - 30%	Inches: 15-19

These values are for the full size range of this product. The special size range offered can vary from country to country.

For detailed information on the sizes offered and the relevant parameters in your country, please refer to the table section.

Application: Street-legal tuning cars and club racers

Benefits

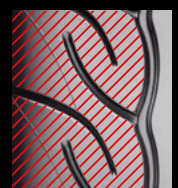
- The fine-tuned compound for sporty feeling and performance
- The street-legal tyre complies with European standard for rolling resistance
- Stability and fast response during high-speed driving

Features

- Sequential Round Groove for long-life grip
- Uni-block Shoulder for rigidity of the tread
- Groove-in-Groove for even wear and stability



Sequential Round Groove



Uni-block Shoulder

JUST FOR YOU, URBAN SUV TYRES.



BluEarth-XT AE61

 **YOKOHAMA**

For information about the EU Tyre Label, tyre labelling data and further technical details, see the corresponding sections inside this catalogue or price list respectively. You can also refer to the YOKOHAMA website www.yokohama.eu (not for country specific product and size availability).

Just for You, Urban SUV Tyre

BluEarth-XT_{AE61}



AE61

Please see table section for available sizes.


OE
**Original
Equipment**

EU Label Range

Fuel Efficiency Class	B-C
Wet Grip Class	A-C
External Rolling Noise Class	A-B
and Measured Value (dB)	67-69
Series: 65 % - 45 %	Inches: 16-20

These values are for the full size range of this product. The special size range offered can vary from country to country.

For detailed information on the sizes offered and the relevant parameters in your country, please refer to the table section.

Application: Urban SUV, Crossover SUV

Benefits

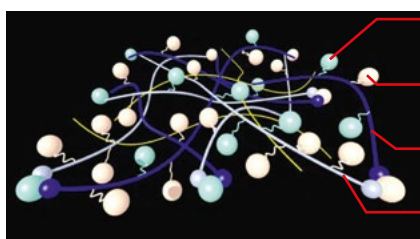
- Handling and steering stability on-road
- Resistance to uneven wear, specially made for SUVs with high centers of gravity
- Solid wet grip

Features

- Asymmetric pattern with optimally designed inside and outside
- nano BLEND rubber compound
- Optimised road contact surface shape

nano BLEND rubber compound

Includes double Silica and blend polymer.



Silica

Silica that affects wet grip

Polymer that affects wet grip

Polymer that affects wet grip

Pattern for Urban SUVs

TRIPLE CENTER RIB

Three high-rigidity ribs for straight-line stability.

POWER INSIDE SHOULDER

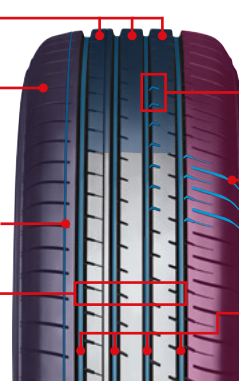
The high-rigidity shoulder aims to deliver steering stability and resistance to uneven wear.

INSIDE NARROW GROOVE

Focuses on wet grip performance.

OPTIMISING LUG GROOVE LAYOUT

Aims to reduce Air pumping noise and to disperse the timing of road surface contact.



SILENT EDGE GROOVE

Grooves cut into the inner sides of the ribs, aiming to reduce the pass by noise.

HIGH-RIGIDITY ACTIVE SHOULDER

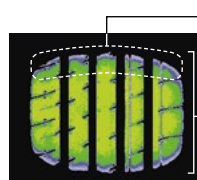
Non-penetrating grooves and sipes for shoulder stiffness, steering stability and anti-wobble.

FOUR STRAIGHT GROOVES

Supporting wet grip and resistance to aquaplaning.

Optimised road contact surface shape

Smooth road contact surface shape and uniform contact pressure achieve uneven wear resistance and straight-line stability.



Smooth road contact surface shape contributes to uneven wear resistance.

Optimised road contact surface shape length of center area aims to provide straight-line stability.

Grand Touring Spirit

BluEarth-GT AE51



AE51

Please see table section for available sizes.



OE
Original
Equipment

EU Label Range

Fuel Efficiency Class	B-C
Wet Grip Class	A-C
External Rolling Noise Class and Measured Value (dB)	A-B 67-71
Series: 65 % - 30 %	Inches: 15-20

These values are for the full size range of this product. The special size range offered can vary from country to country.
For detailed information on the sizes offered and the relevant parameters in your country, please refer to the table section.

Application: Grand and Mid Tourers, Luxury Cars, Premium Compact Cars

Benefits

- Driving Stability at highspeed
- Solid wet grip

Features

- High-rigidity, asymmetric pattern for spirited driving
- Advanced Construction achieves both light weight and high durability
- Evolved Compound & honed profile

Asymmetrical Pattern for Spirited Driving

TRIPLE CENTER RIB

Highly rigid triple ribs to ensure straight line stability at high speeds.

BLADE CUT SIPES

Turned rigidity with blade-image sipes.

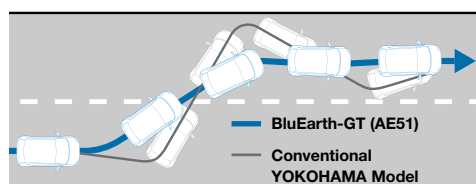
LIGHTNING GROOVES

Increasing total edge volume, aiming to improve grip performance.



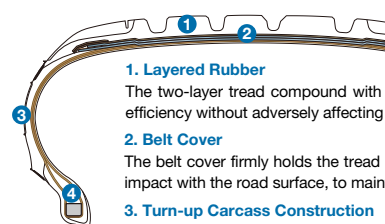
Straight-line Performance

Eliminates Wobble During Lane Changes.



The construction aims to improve the overall balance of performance as well as High-Speed Stability. The result is a sharp steering response.

AE51's construction for Light Weight and Durability



1. Layered Rubber

The two-layer tread compound with an advanced bottom rubber layer, delivers efficiency without adversely affecting the tread's grip performance.

2. Belt Cover

The belt cover firmly holds the tread portion, which must withstand the constant impact with the road surface, to maintain rigidity and straight-line stability.

3. Turn-up Carcass Construction

The tyre's construction - with the carcass tightly wound up to the shoulder to create a two-layer sidewall - achieves both light weight and high rigidity.

4. Bead Fillers

Bead fillers maintain sidewall stiffness. Different types of rubber were developed, component by component, with the goal of improving overall performance.

The Quality Standard Tyre

BluEarth-Es ES32



ES32

Please see table section for available sizes.



**Original
Equipment**

EU Label Range

Fuel Efficiency Class	A-C
Wet Grip Class	B-C
External Rolling Noise Class	A-B
and Measured Value (dB)	67-68
Series: 70 % - 40 %	Inches: 13-18

These values are for the full size range of this product. The special size range offered can vary from country to country.

For detailed information on the sizes offered and the relevant parameters in your country, please refer to the table section.

Application: Compact cars, Small family cars

Benefits

- Focus on tread life and durability
- Stable driving behavior

Features

- Powerful and comfortable tread design
- 5 Pitch Tread Pattern
- Extra powerful profile
- nano BLEND compound

The powerful and comfortable tread design

EXTRA POWERFUL PROFILE

High rigidity and tough,
Anti-uneven wear.

MULTIPLE POWERFUL SHOULDER

Combination of deep
lugs and sipes, for
Stability, Evacuation,
Anti-uneven wear.



LIGHTNING GROOVE

High rigidity and proper
edge volume for
Drainage on Wet roads.

WIDE STRAIGHT GROOVES

Anti-Hydro, Water draining
on Wet braking, for Straight
driving and handling.

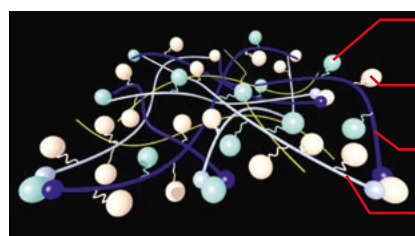
5 Pitch Tread Pattern

Designed with focus on pattern noise reduction and anti-uneven wear.



nano BLEND rubber compound

Includes double Silica and blend polymer.



Silica

Silica that affects
wet grip

Polymer that affects
wet grip

Polymer that affects
wet grip

A tough Tyre for Commercial Vehicles

BluEarth-Van *RY55*



RY55

Please see table section for available sizes.



OE
Original
Equipment

EU Label Range

Fuel Efficiency Class	C
Wet Grip Class	B
External Rolling Noise Class and Measured Value (dB)	B 71-72
Series: 70 % - 55 %	Inches: 15-17

These values are for the full size range of this product. The special size range offered can vary from country to country.

For detailed information on the sizes offered and the relevant parameters in your country, please refer to the table section.

Application: Transporters, Light Trucks, Cargos, modern Vans and Pick-Ups

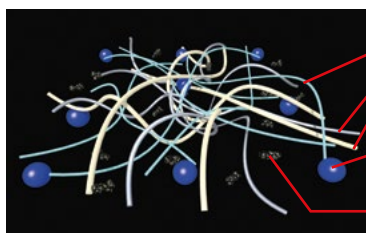
Benefits

- Focus on mileage and durability
- Reliable Wet Braking characteristics

Features

- Powerful and tough tread design
- Advanced profile design and tough construction
- Compound developed with triple polymer and Silica
- Kerbing Rib for protecting against sidewall-damage

Compound



Triple Polymer

Strong & tough polymers for tread life and resistance to uneven wear.

Silica

Large amount of Silicas are used to support Wet Performance.

Carbon

The powerful and tough tread design

POWERFUL PROFILE

High rigidity and tough, resists uneven wear.

MULTIPLE TRIANGLE BLOCK

High rigidity and proper edge volume. Drainage on Wet roads.

WIDE STRAIGHT GROOVES

Anti-Hydro, Water draining on Wet braking. Straight driving and handling.



MULTIPLE AGGRESSIVE SHOULDER

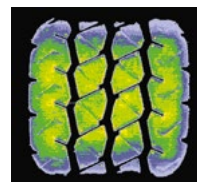
Combination of deep lugs and sipes. Stability, Evacuation, resists uneven wear.

3 PITCH TREAD PATTERN

To reduce pattern noise and to resist uneven wear.

Contact pressure

Contact shape optimisation and contact pressure homogenisation to improve uneven wear.



Conventional
YOKOHAMA Tyre
(RY818)



BluEarth-Van RY55



Adventure More.



GEOLANDAR
X-MT



GEOLANDAR
M/T G003



GEOLANDAR
A/T G013

GEOLANDAR A/T4



For information about the EU Tyre Label, tyre labelling data and further technical details, see the corresponding sections inside this catalogue or price list respectively. You can also refer to the YOKOHAMA website www.yokohama.eu (not for country specific product and size availability).

Adventure more


New


G018

Please see table section for available sizes.

GEOLANDAR A/T4


M+S


Maximum speed
180 km/h in case of S speed symbol
170 km/h in case of R speed symbol
(Speed symbol varies depending on size)

EU Label Range

Fuel Efficiency Class	E
Wet Grip Class	B
External Rolling Noise Class	B
and Measured Value (dB)	75
Series: 85 % - 60 %	Inches: 15 - 18

These values are for the full size range of this product. The special size range offered can vary from country to country.

For detailed information on the sizes offered and the relevant parameters in your country, please refer to the table section.

Application: Pick-up and SUV users with Off-road trend

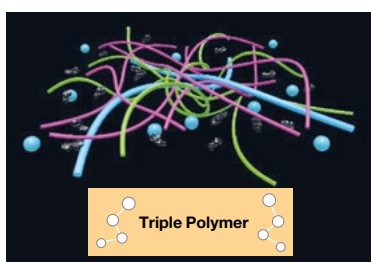
Benefits

- Aggressive tread pattern and side block
- Three-Peak Mountain Snowflake
- Design Focus on Mileage

Features

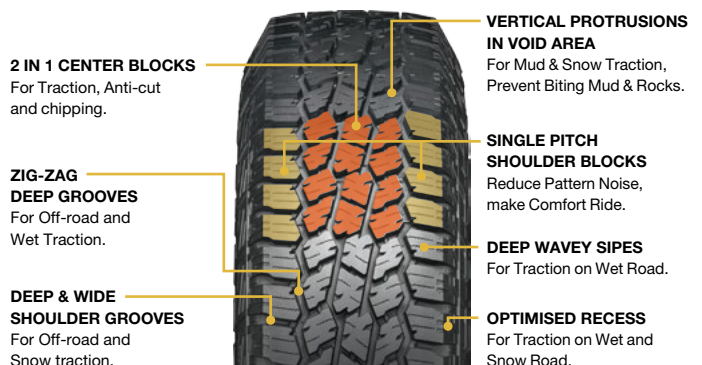
- Better off-road traction and anti-cut and chipping
- All Season tyre
- Dual side wall

Compound Technology

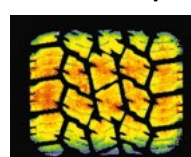


Compound contributes to longer tread life, aiming to prevent cut & Chipping.

Aggressive Block Tread Pattern



Contact Shape: Balanced off-road traction and Tread Life



Contact Shape

Lug block is firmly grounded

Feature

More Traction & Tread Life

Off-road Traction and Extreme Design



G005

Please see table section for available sizes.

GEOLANDAR X-MT

POR **M+S**

EU Tyre Label does not apply
to POR marked tyres.

Application: Extremely tuned Pick-ups & Off-road
and dress-up SUVs

Benefits

- Traction on Off-road surfaces
- Traction on slippery surfaces

Features

- Rock Concept Design: the aggressive block pattern contributes to Off-road Traction
- Wide lug Groove and recess in Sipes
- Side Block Design: Tread Design extended to the sidewall, aggressive side block look

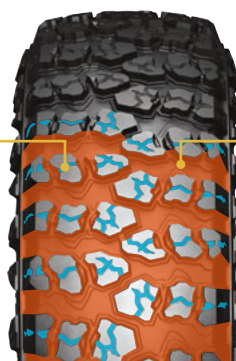
Wide Lug Groove and Recess in Sipes

RECESS IN SIPES

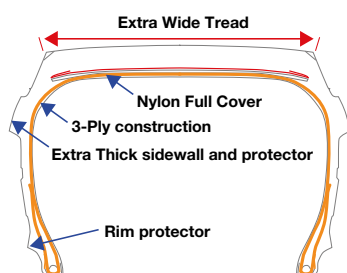
A key technology for X-MT.

WIDE LUG GROOVE

Satisfied with
Off-road Traction.



Construction



Nylon Full Cover

A nylon full cover to improve tread
area damage.

Extra Thick sidewall and protector

Anti-side cut performance

Side Block Design



The sidewall incorporates larger side blocks which suit the tyre's large diameter. In addition to bolstering performance in deep mud and rock, the design boosts the overall Off-road performance. The sidewall also features solid lettering that differs from the normal logo usage for the GEOLANDAR brand which contributes to the Off-road look.

Merciless Traction

GEOLANDAR M/T G003

POR **M+S**

EU Tyre Label does not apply
to POR marked tyres.



G003

Please see table section for available sizes.

Application: Mud-Terrain SUVs, 4x4s and Pick-ups

Benefits

- Off-road Traction
- Wear resistance with anti-cut and anti-chipping performance
- Comfortable Off-road Tyre

Features

- Wide tread with aggressive, symmetric block pattern
- Attractive sidewall design through extension of tread design
- High density compound with triple polymer blend

Aggressive Symmetric Block Pattern

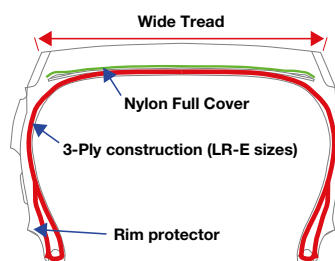


Extended tread design to sidewall



- The attractive side design extends from the tread to enhance the deep mud traction and to improve side cut performance.
- For durability and off-road traction.

Nylon Full Cover and Wide Tread Profile



Nylon Full Cover

A nylon full cover to improve tread area damage.

3-Ply construction (LR-E sizes)

To improve anti side cut performance.

Go-everywhere performance



G016

Please see table section for available sizes.

GEOLANDAR X-AT

POR **M+S**

EU Tyre Label does not apply
to POR marked tyres.

Application: All-Terrain Pick-up & Off-Road SUVs

Benefits

- Focus on wear performance
- Off-road Traction and durability

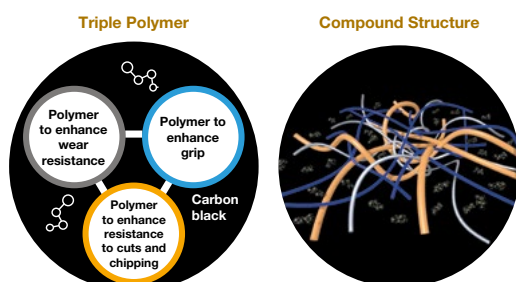
Features

- 2 in 1 Aggressive Tread Pattern
- Construction is aiming for Durability
- Compound Technology – High hardness Compound
- Two sidewall designs

2 in 1 Aggressive Tread Pattern

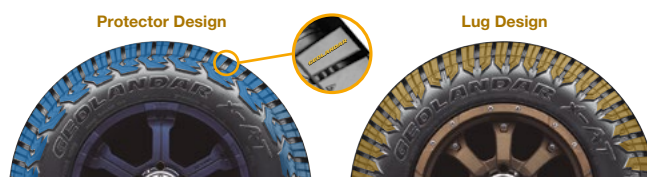


Compound Technology



High Hardness Compound contributes to Mileage, Anti-cut & Chipping, Handling and Off-road Traction.

Two Sidewall Designs



Two different Sidewall Designs. The Tread Design is extended to the side and into extreme aggressive side blocks. Brand Logos are raised in black letters on the tyre side, with additional GEOLANDAR Logos on 4 points at the shoulder.

All-terrain Tyre with advanced technologies

GEOLANDAR A/T G015



G015

Please see table section for available sizes.

M+S


Maximum speed
210 km/h in case of H speed symbol
190 km/h in case of T speed symbol
180 km/h in case of S speed symbol
(Speed symbol varies depending on size)

EU Label Range

Fuel Efficiency Class	E
Wet Grip Class	C
External Rolling Noise Class and Measured Value (dB)	A-B 70-73
Series: 80 % - 45 %	Inches: 15-22

These values are for the full size range of this product. The special size range offered can vary from country to country.

For detailed information on the sizes offered and the relevant parameters in your country, please refer to the table section.

Application: SUVs, 4x4s & Pick-ups

Benefits

- Cut and Chipping Resistance
- Aiming for Mileage performance
- Grip on snowy winter roads with Snowflake Mark (3 Peak Mountain Snowflake)

Features

- Tread Pattern Technology with 3-D-shaped Sipes, Optimised Lug Grooves, 4 main grooves and pitch variation
- Nylon Full Cover and Wide Tread Profile
- Aggressive pattern and side design

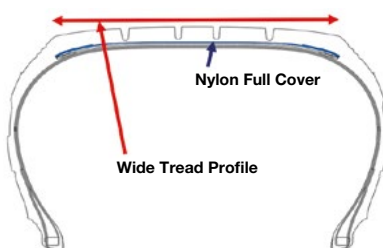
G015 Tread Pattern

4 DEEP MAIN GROOVES
4 Main Straight Grooves for drainage performance, anti-aquaplaning capabilities and to support wet braking.



OPTIMISED LUG GROOVE
The optimised allocation of the lug grooves help to beat down Off-road surfaces to support traction.

Nylon Full Cover and Wide Tread Profile



Nylon Full Cover

A nylon full cover aims to reduce damage on the tread area for better durability.

Wide Tread Profile

The wide Tread Profile supports mileage, traction and high speed performance.

Aggressive Side Design



The Side Design combines an aggressive appearance with durability. Outlined White Letters on the flank are available for chosen sizes.

Comfort and Balance for your SUV

GEOLANDAR X-CV



G057

Please see table section for available sizes.


M+S
OE
**Original
Equipment**
EU Label Range

Fuel Efficiency Class	B-D
Wet Grip Class	B-C
External Rolling Noise Class and Measured Value (dB)	A-B 69-75
Series: 70 % - 35 %	Inches: 18-22

These values are for the full size range of this product. The special size range offered can vary from country to country.

For detailed information on the sizes offered and the relevant parameters in your country, please refer to the table section.

Application: Premium and Performance Crossover SUVs

Benefits

- Constructed for mileage performance
- Comfortable ride

Features

- Asymmetric pattern with 4 wide straight grooves
- 2-D & 3-D combination sipes
- 5 Pitch Variation
- Silica end-locked Polymer and Micro Silica

G057 Tread Pattern
ASYMMETRIC PATTERN

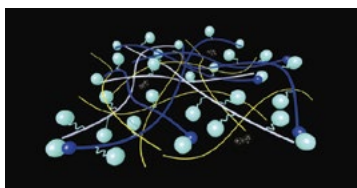
The Asymmetric Pattern design supports the traction and handling on wet and dry surfaces.

4 WIDE STRAIGHT GROOVES

Effects Wet and Hydroplaning. For WET.

2-D/3-D COMBINATION SIPES
For traction and Mileage. For WET / Snow.

3-D SIPE
2-D SIPE


Silica end-locked Polymer and Micro Silica


Micro Silica is used to support stability on dry surfaces while Silica end-locked Polymer is focussing on wet performance.

5 Pitch Variation


Noise reduction is the aim of the 5 Pitch Variation pattern design of GEOLANDAR X-CV.

Grand Touring Tyre for Crossover SUVs

GEOLANDAR CV G058



G058


M+S

EU Label Range

Fuel Efficiency Class	D
Wet Grip Class	B
External Rolling Noise Class and Measured Value (dB)	B 71
Series: 70 % – 50 %	Inches: 16 – 20

These values are for the full size range of this product. The special size range offered can vary from country to country.

For detailed information on the sizes offered and the relevant parameters in your country, please refer to the table section.

Please see table section for available sizes.

Application: Crossover SUVs

Benefits

- Constructed for mileage performance
- Comfortable ride

Features

- Advanced Compound Technology – Blend Polymer & Micro Silica
- Sipe based Symmetric Pattern with 4 Combination Main Grooves
- Wide and flat Contact Shape

G058 Tread Pattern

SIPE BASED

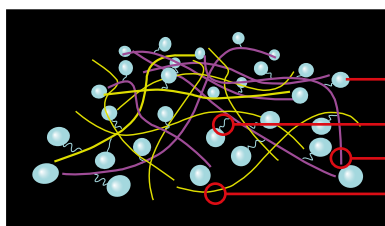
SYMMETRIC PATTERN
For traction and to reduce uneven wear.

4 COMBINATION GROOVES

Combination of Center and Shoulder Grooves for traction and the reduction of hydroplaning risk.



Advanced Compound Technology

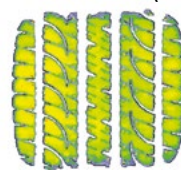


- Micro Silica
- Silica Dispersant
- Blend Polymer for wet
- Blend Polymer for snow

Advanced Compound Technology for Silica dispersion.

Profile and Contact Shape

Conventional Model (G055)



Traditional Profile Blocks

GEOLANDAR CV G058



Shoulder and 2nd Rib Round Profile Blocks

A wide and flat contact shape aims to improve even wear and to contribute to a higher Mileage. Traction is supported by round profile blocks for Shoulder and 2nd Rib.

Comfort, everywhere you go

GEOLANDAR H/T G056



G056

M+S**OE****Original
Equipment****EU Label Range**

Fuel Efficiency Class	C-D
Wet Grip Class	C-D
External Rolling Noise Class and Measured Value (dB)	A-B 70-72
Series: 70 % - 50 %	Inches: 17-21

These values are for the full size range of this product. The special size range offered can vary from country to country.

For detailed information on the sizes offered and the relevant parameters in your country, please refer to the table section.

Please see table section for available sizes.

Application: New generation SUV and
Pick up car tyre

Benefits

- Enjoy lasting comfort in cities, on highways and off-road
- Highway terrain tyre for 4x4 and SUV

Features

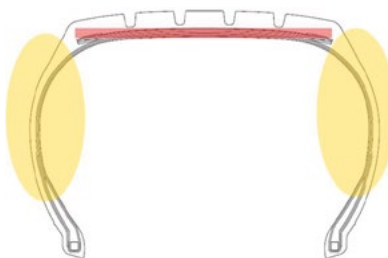
- Tread design which aims to improve the pass-by noise
- 5 Pitch Variation to control the frequency peak
- Multiple lug grooves

G056 Tread Pattern**Compound**

Blend Polymer
For wear resistance, durability and grip performance.

Silica
To support wet grip while also improving wear resistance.

Carbon
To reinforce the polymer and to increase wear resistance.

Construction

Full Nylon cover is used to thicken the sidewall and to protect the tyre against lift-up of the belt during high speed driving and to prevent tread cracks and side cuts. This has a positive impact on the durability of the tyre.

The Tyre to transcend all Seasons

GEOLANDAR CV4S



G061

Please see table section for available sizes.



Maximum speed
 240 km/h in case of V speed symbol
 210 km/h in case of H speed symbol
 190 km/h in case of T speed symbol
 (Speed symbol varies depending on size)

EU Label Range	
Fuel Efficiency Class	C
Wet Grip Class	B – C
External Rolling Noise Class and Measured Value (dB)	B 71 – 73
Series: 70 % – 45 %	Inches: 17 – 20

These values are for the full size range of this product. The special size range offered can vary from country to country.

For detailed information on the sizes offered and the relevant parameters in your country, please refer to the table section.

Application: Crossover SUVs,
Performance Crossover SUVs

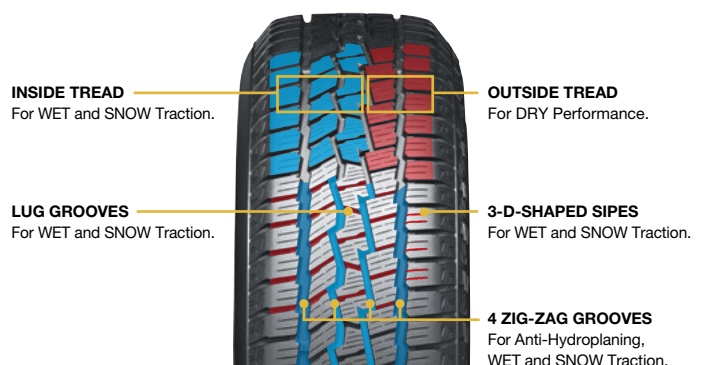
Benefits

- All Season Tyre
- Design Focus on Snow and Wet Performance

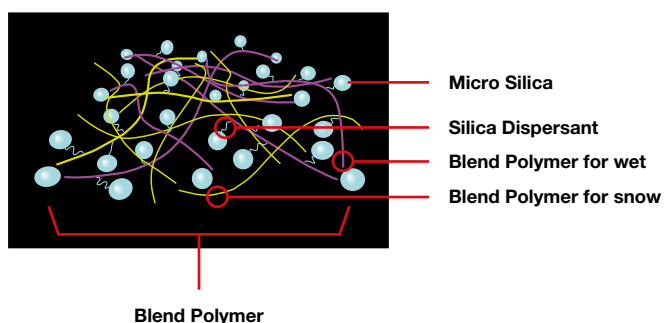
Features

- Asymmetric Tread design based on snow pattern
- Powerful side Design with highlighted logo and black letters
- Nylon Full Cover of the belt for Durability
- Tread Lug Grooves and Sipes for Snow Performance

Asymmetric Pattern Design for WET, SNOW and DRY

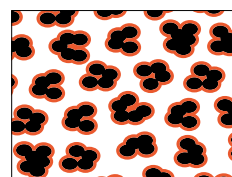


Compound Technology

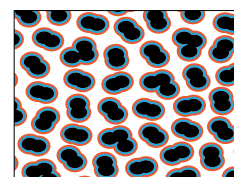


Micro Silica

Improved Silica dispersion



Conventional YOKOHAMA Product



GEOLANDAR CV 4S

The One for All Seasons

BluEarth-4S^{AW21}



AW21

Please see table section for available sizes.



Maximum speed
 300 km/h in case of Y speed symbol
 270 km/h in case of W speed symbol
 240 km/h in case of V speed symbol
 210 km/h in case of H speed symbol
 190 km/h in case of T speed symbol
 (Speed symbol varies depending on size)

EU Label Range

Fuel Efficiency Class	C-D
Wet Grip Class	B-C
External Rolling Noise Class	B
and Measured Value (dB)	70-73
Series: 70 % - 35 %	Inches: 14-22

These values are for the full size range of this product. The special size range offered can vary from country to country.

For detailed information on the sizes offered and the relevant parameters in your country, please refer to the table section.

Application: Small and Compact cars, mid-size sedan, modern SUVs & CUVs

Benefits

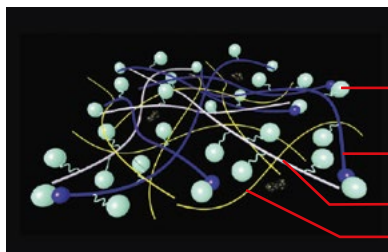
- Advanced compound for snow, wet and dry
- Grip in winterly conditions (snow)
- Sound braking performance on wet & dry summer roads
- Constructed for mileage performance

Features

- Divergent V-Groove
- Flat & Wide Contour
- Silica End-locked compound

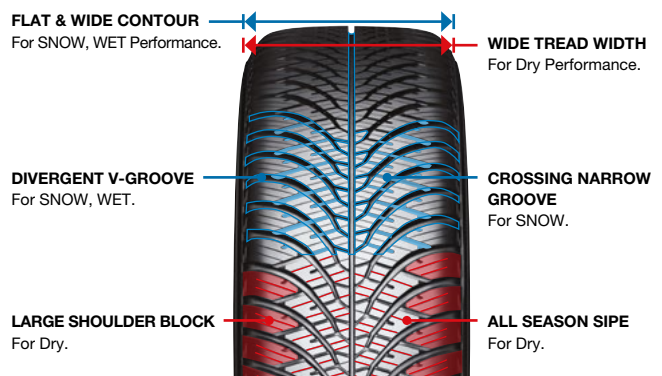
Compound

for SNOW/WET Performance

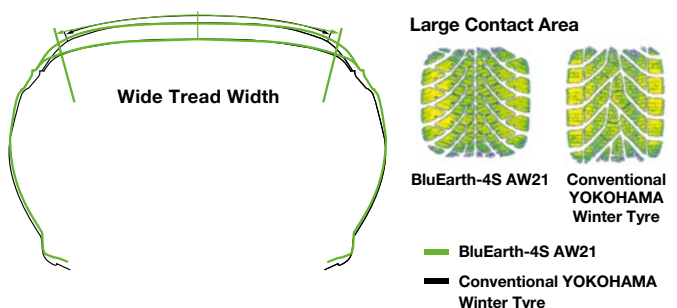


- Micro Silica
- Silica End-Locked Polymer
- Snow Grip Polymer
- Wet Grip Polymer

Tread Pattern Design



Tyre Contour



Strong and Smooth – Whatever the Season

BluEarth-Van All Season RY61



RY61

Please see table section for available sizes.



Maximum speed
210 km/h in case of H speed symbol
190 km/h in case of T speed symbol
170 km/h in case of R speed symbol
(Speed symbol varies depending on size)

EU Label Range

Fuel Efficiency Class	C–D
Wet Grip Class	B
External Rolling Noise Class and Measured Value (dB)	B 73
Series: 75 % – 55 %	Inches: 15 – 17

These values are for the full size range of this product. The special size range offered can vary from country to country.

For detailed information on the sizes offered and the relevant parameters in your country, please refer to the table section.

Application: Transporters, Light Commercial Vehicles, Cargos and Modern Vans

Benefits

- Constructed for mileage performance
- Strong and smooth drive on various road conditions, all year round
- Focus on Wet Performance

Features

- Remarkable Tread Design
- Compound for toughness
- Construction: Bead Flipper

Compound



Triple Polymer

Strong & tough polymers for tread life. Resistance to uneven wear, cut and chip.

Silica

Large amount of Silicas are used to support Wet Performance.

Carbon

RY61 Tread Pattern

TOUGH CENTER BLOCKS

Large Blocks placed in the center, creating rigidity and large contact area with ground, preventing irregular wear.

TRIPLE WIDE & DEEP GROOVES

To enhance snow/water evacuation, for Snow and Wet Performance.

STRAIGHT GROOVES

For smooth water drainage.



SQUARE SHOULDER BLOCK

Wide Contact Area for cornering, preventing irregular wear by high rigidity.

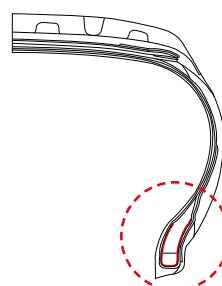
SNOW BITING SIPES

Scratch snow for snow performance.

CENTER ZIG-ZAG GROOVE

Creating edges to snow, crossing Wide Lugs creating shear force.

Construction



Bead Flipper

For anti-burst

For driving stability

- Aims to prevent wear of bead & carcass in high load
- Keeps bead filler from falling

YOKOHAMA A-008P

The A-008P a true Classic



EU Label Range

Fuel Efficiency Class	D
Wet Grip Class	B
External Rolling Noise Class and Measured Value (dB)	B 70

Series: 55 % - 45 %

Inches: 16

These values are for the full size range of this product. The special size range offered can vary from country to country. For detailed information on the sizes offered and the relevant parameters in your country, please refer to the table section.

A-008P Features

- Jointless nylon full cover
- Steel belt and steel reinforcement
- Dual layer tread compound
- Asymmetric pattern design



GT.SPECIAL CLASSIC Y350

Reviving the Culture of Classic Cars



EU Label Range

Fuel Efficiency Class	D
Wet Grip Class	D
External Rolling Noise Class and Measured Value (dB)	A 67

Series: 80 %

Inches: 10 - 15

These values are for the full size range of this product. The special size range offered can vary from country to country. For detailed information on the sizes offered and the relevant parameters in your country, please refer to the table section.

Y350 Features

- Classical tread pattern and side design of the predecessor
- Distinctive, original style
- Classic appearance with latest tyre technologies



A539

Spirit and Style for Classic Cars



EU Label Range

Fuel Efficiency Class	D
Wet Grip Class	C
External Rolling Noise Class and Measured Value (dB)	B 69

Series: 60 % - 50 %

Inches: 12 - 13

These values are for the full size range of this product. The special size range offered can vary from country to country. For detailed information on the sizes offered and the relevant parameters in your country, please refer to the table section.




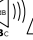


A539 Features




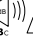


- Signature design Pattern for classic cars
- Balanced comfort and performance in wet & dry
- Asymmetric tread pattern for stable cornering






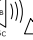


Original Equipment




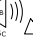





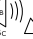





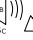







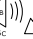





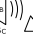


AUDI									
Model	Tyre Description	Tyre Brand Name							C
A6 (C7)	255/35R20 97Y	XL/RF ADVAN Sport V103S AO	D	B	B	73	-	-	C1
		XL/RF ADVAN Sport V103S AO	D	B	B	72	-	-	C1
	255/40R19 100Y	XL/RF ADVAN Sport V103S AOE	D	B	B	71	-	-	C1
A7 (C7)	265/35R20 99Y	XL/RF ADVAN Sport V103S AO	D	B	B	73	-	-	C1
		XL/RF ADVAN Sport V103S AO	D	B	B	72	-	-	C1
	255/40R19 100Y	XL/RF ADVAN Sport V103S AOE	D	B	B	71	-	-	C1
	255/45R18 99Y	ADVAN Sport V103S AO	D	B	B	71	-	-	C1
	235/55R17 99Y	ADVAN Sport V103S AO	D	B	B	71	-	-	C1
S6 (C7)	255/35R20 97Y	XL/RF ADVAN Sport V103S AO	D	B	B	73	-	-	C1
	255/40R19 100Y	XL/RF ADVAN Sport V103S AO	D	B	B	72	-	-	C1
S7 (C7)	265/35R20 99Y	XL/RF ADVAN Sport V103S AO	D	B	B	73	-	-	C1
	255/40R19 100Y	XL/RF ADVAN Sport V103S AO	D	B	B	72	-	-	C1
S8 (D3)	265/35ZR20 99Y	XL/RF ADVAN Sport V103S	D	B	B	73	-	-	C1
RS6 (C7)	275/35ZR20 (102Y)	XL/RF ADVAN Sport V105D RO1	D	A	B	73	-	-	C1
RS7 (C7)	275/35ZR20 (102Y)	XL/RF ADVAN Sport V105D RO1	D	A	B	73	-	-	C1
TTS (TT3)	255/30ZR20 (92Y)	XL/RF ADVAN Sport V105 RO1	D	A	B	73	-	-	C1
TT RS (TT3)	255/30ZR20 (92Y)	XL/RF ADVAN Sport V105 RO1	D	A	B	73	-	-	C1
Q7	275/45R20 110Y	XL/RF ADVAN Sport V103B AO	D	B	B	73	-	-	C1
	265/50R19 110Y	XL/RF ADVAN Sport V103B AO	D	B	B	73	-	-	C1




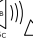


BMW									
Model	Tyre Description	Tyre Brand Name							C
7 series	245/50R19 105Y	XL/RF ADVAN Sport V107E ★	A	B	B	70	-	-	C1
	(F)255/45R20 105Y	XL/RF ADVAN Sport V107E ★ SF	A	A	A	67	-	-	C1
	(R)285/40R20 108Y	XL/RF ADVAN Sport V107E ★	A	B	A	69	-	-	C1
iX3	245/50R19 105W	XL/RF ADVAN Sport V107E ★	A	B	A	69	-	-	C1
	(F)245/45R20 103W	XL/RF ADVAN Sport V107E ★	A	B	A	68	-	-	C1
	(R)275/40R20 106W	XL/RF ADVAN Sport V107E ★	A	B	A	69	-	-	C1
X3	225/60R18 104W	XL/RF ADVAN Sport V107D ★	A	A	B	72	-	-	C1
	245/50R19 105W	XL/RF ADVAN Sport V105 ZPS ★ RSC B	A	B	B	71	-	-	C1
X3 MPA	(F)245/45R20 103Y	XL/RF ADVAN Sport V105T ★	D	A	A	69	-	-	C1
	(R)275/40R20 106Y	XL/RF ADVAN Sport V105E ★	C	A	B	71	-	-	C1
X4	225/60R18 104W	XL/RF ADVAN Sport V107D ★	A	A	B	72	-	-	C1
	245/50R19 105W	XL/RF ADVAN Sport V105 ZPS ★ RSC B	A	B	B	71	-	-	C1
X4 MPA	(F)245/45R20 103Y	XL/RF ADVAN Sport V105T ★	D	A	A	69	-	-	C1
	(R)275/40R20 106Y	XL/RF ADVAN Sport V105E ★	C	A	B	71	-	-	C1
X5 MPA	(F)275/40R21 107Y	XL/RF ADVAN Sport V107E ★ SF	D	A	A	69	-	-	C1
	(R)315/35R21 111Y	XL/RF ADVAN Sport V107E ★ SF	C	A	A	70	-	-	C1
X6 MPA	(F)275/40R21 107Y	XL/RF ADVAN Sport V107E ★ SF	D	A	A	69	-	-	C1
	(R)315/35R21 111Y	XL/RF ADVAN Sport V107E ★ SF	C	A	A	70	-	-	C1
X7	(F)HL275/35R23 108Y	XL/RF ADVAN Sport V107E ★	D	A	A	70	-	-	C1
	(R)HL315/30R23 111Y	XL/RF ADVAN Sport V107E ★	D	A	A	71	-	-	C1
XM	(F)275/45R21 110Y	XL/RF ADVAN Sport V107E ★	D	A	A	69	-	-	C1
	(R)315/40R21 115Y	XL/RF ADVAN Sport V107E ★	D	B	A	70	-	-	C1
	(F)275/40R22 107Y	XL/RF ADVAN Sport V107E ★	C	A	A	69	-	-	C1
	(R)315/35R22 111Y	XL/RF ADVAN Sport V107E ★	C	A	A	72	-	-	C1
	(F)275/40R22 107Y	XL/RF ADVAN Sport V107E I ★	D	A	A	70	-	-	C1
	(R)315/35R22 111Y	XL/RF ADVAN Sport V107E I ★	D	B	A	71	-	-	C1

BMW M									
(1/2)									
Model	Tyre Description	Tyre Brand Name							C
M2	(F)275/35ZR19 (100Y)	XL/RF ADVAN Sport V107E ★	D	A	A	70	-	-	C1
	(R)285/30ZR20 (99Y)	XL/RF ADVAN Sport V107E ★	D	A	A	72	-	-	C1
M3	(F)285/30ZR20 (99Y)	XL/RF ADVAN Sport V107E I ★	D	A	A	72	-	-	C1
	(R)295/25ZR21 (96Y)	XL/RF ADVAN Sport V107E ★	D	A	A	70	-	-	C1

BMW M									
(2/2)									
Model	Tyre Description	Tyre Brand Name							C
M3	(F)275/35ZR19 (100Y)	XL/RF ADVAN Sport V107E ★	D	A	A	70	-	-	C1
	(R)285/30ZR20 (99Y)	XL/RF ADVAN Sport V107E ★	D	A	A	72	-	-	C1
	(F)275/40ZR18 (103Y)	XL/RF ADVAN Sport V107E ★	D	A	B	71	-	-	C1
	(R)285/35ZR19 (103Y)	XL/RF ADVAN Sport V107E ★	C	A	A	71	-	-	C1
M3 Touring	(F)285/30ZR20 (99Y)	XL/RF ADVAN Sport V107E I ★	D	A	A	72	-	-	C1
	(R)295/25ZR21 (96Y)	XL/RF ADVAN Sport V107E ★	D	A	A	70	-	-	C1
	(F)275/35ZR19 (100Y)	XL/RF ADVAN Sport V107E ★	D	A	A	70	-	-	C1
	(R)285/30ZR20 (99Y)	XL/RF ADVAN Sport V107E ★	D	A	A	72	-	-	C1
	(F)285/30ZR20 (99Y)	XL/RF ADVAN Sport V107E I ★	D	A	A	72	-	-	C1
M4	(R)295/25ZR21 (96Y)	XL/RF ADVAN Sport V107E ★	D	A	A	70	-	-	C1
	(F)275/35ZR19 (100Y)	XL/RF ADVAN Sport V107E ★	D	A	A	70	-	-	C1
	(R)285/30ZR20 (99Y)	XL/RF ADVAN Sport V107E ★	D	A	A	72	-	-	C1
	(F)275/35ZR19 (100Y)	XL/RF ADVAN Sport V107E ★	D	A	A	70	-	-	C1
	(R)285/30ZR20 (99Y)	XL/RF ADVAN Sport V107E ★	D	A	A	72	-	-	C1
	(F)275/40ZR18 (103Y)	XL/RF ADVAN Sport V107E ★	D	A	B	71	-	-	C1
	(R)285/35ZR19 (103Y)	XL/RF ADVAN Sport V107E ★	C	A	A	71	-	-	C1
M5	(F)275/40ZR19 (105Y)	XL/RF ADVAN Sport V105 ★	D	A	B	72	-	-	C1
	(R)285/40ZR19 (107Y)	XL/RF ADVAN Sport V105E ★	C	A	B	74	-	-	C1

CITROËN									
Model	Tyre Description	Tyre Brand Name							C
C4 Aircross	215/70R16 100H	GEOLANDAR G033	C	B	B	71	-	-	C1
FIAT									
Model	Tyre Description	Tyre Brand Name							C
124 Spider	195/50R16 84V	ADVAN Sport V105	D	C	B	71	-	-	C1
HONDA									
Model	Tyre Description	Tyre Brand Name							C
Accord	225/50R17 98V	XL/RF YOKOHAMA dB E70D	D	C	B	72	-	-	C1
CR-Z	195/55R16 87V	ADVAN A10E	D	C	B	71	-	-	C1
Honda e	(F)185/60R16 86H	BluEarth-A AE50	C	C	B	68	-	-	C1
	(R)205/55R16 91V	BluEarth-A AE50	C	C	B	71	-	-	C1
Insight	185/60R15 84H	BluEarth E50CA	C	C	B	69	-	-	C1
	175/65R15 84T	YOKOHAMA S71B	C	C	B	70	-	-	C1
Jazz	175/65R14 82T	ASPEC A349G	D	C	B	70	-	-	C1
	175/65R15 84T	YOKOHAMA S71A	C	C	B	70	-	-	C1
	185/55R16 87H	XL/RF BluEarth-A AE50	C	C	A	68	-	-	C1
ZR-V	185/60R15 88H	XL/RF BluEarth-FE AE30	B	B	A	67	-	-	C1
	225/55R18 98H	ADVAN dB V552	C	A	A	67	-	-	C1

INFINITI									
Model	Tyre Description	Tyre Brand Name							C
Q30/QX30	235/50R18 97V	C.drive2 AC02A	C	C	B	71	-	-	C1
ISUZU									
Model	Tyre Description	Tyre Brand Name							C
D-Max	205R16C 110/108S	GEOLANDAR G97A	C	B	B	70	-	-	C2

JEEP									
Model	Tyre Description	Tyre Brand Name							C
Cherokee	245/65R17 107H	GEOLANDAR SUV G055	C	C	B	71	-	-	C1

ADVAN V61A



BluEarth-GT AE51B



GEOLANDAR G91F



For information about the EU Tyre Label, Tyre labelling data, Original Equipment and further technical details of our OE Tyres, please see the OE section beneath or refer to the YOKOHAMA website www.yokohama.eu

LEXUS

Model	Tyre Description	Tyre Brand Name		C
CT	215/45R17 87W	YOKOHAMA dB E70J	D B B 70 - -	C1
		ADVAN A460J	D C B 71 - -	C1
	205/55R16 91V	YOKOHAMA dB E70J	D C B 70 - -	C1
	195/65R15 91H	ASPEC A349G	D C B 70 - -	C1
ES	215/55R17 93V	YOKOHAMA dB E70B	D C B 70 - -	C1
	215/55R17 94V	BluEarth GT AE51B	C C A 67 - -	C1
GS		ADVAN A10F	D C B 71 - -	C1
	225/50R17 94W	ADVAN A10E	D C B 71 - -	C1
IS	225/45R17 91W	BluEarth E51A/B	D C B 70 - -	C1
LBX	225/55R18 98H	ADVAN V61H	B B A 68 - -	C1
	225/60R17 99H	ADVAN V61H	B B A 68 - -	C1
LX	285/60R18 116V	GEOLANDAR G94BV	C C B 73 - -	C1
	265/65R18 114V	GEOLANDAR A/T G031	C C B 72 - -	C1
	265/50R22 112V	XL/RF GEOLANDAR X-CV G057B	B C B 72 - -	C1
NX		BluEarth E51B	D C B 70 - -	C1
		BluEarth E51A	D C B 70 - -	C1
		BluEarth-XT ZPS EMT AE61E	B C B 69 - -	C1
		BluEarth-XT AE61E	B C B 69 - -	C1
	225/65R17 102H	GEOLANDAR G91AV	C D B 71 - -	C1
RX	235/60R19 103V	ADVAN V61F	B C A 67 - -	C1
RZ	(F)235/60R18 103H	ADVAN V61A	A B A 68 - -	C1
	(R)255/55R18 105V	ADVAN V61A	B B B 70 - -	C1

LOTUS

Model	Tyre Description	Tyre Brand Name		C
Elise (Sport/ Sport 220/ Sprint/ Sprint 220)	(F)195/50R16 84W	ADVAN Sport V105 OE	D C B 71 - -	C1
	(R)225/45R17 91W	ADVAN Sport V105 MO	D B B 71 - -	C1
Elise (Cup 250)	(F)195/50R16 88W	XL/RF ADVAN A052	D B B 71 - -	C1
	(R)225/45R17 94W	XL/RF ADVAN A052	D A B 71 - -	C1

MAZDA

Model	Tyre Description	Tyre Brand Name		C
CX-30	215/65R16 98H	BluEarth-GT AE51E	B B A 68 - -	C1
CX-5		GEOLANDAR G98FV	C B B 70 - -	C1
	225/65R17 102V	GEOLANDAR G98GV	C B B 70 - -	C1
CX-60	235/60R18 103V	ADVAN V61B	B B A 68 - -	C1
	235/60R18 107V	XL/RF ADVAN V61E	B B B 70 - -	C1
CX-70	265/55R19 109V	ADVAN V61G	B B A 69 - -	C1
	265/55R19 109V	GEOLANDAR X-CV M+S G057H	B B A 69 - -	C1
CX-8	225/65R17 102H	GEOLANDAR G98GV	C B B 70 - -	C1
CX-9	P255/60R18 107H	GEOLANDAR H/T G056B	C C B 72 - -	C1
CX-90	265/55R19 109V	ADVAN V61G	B B A 69 - -	C1
	265/55R19 109V	GEOLANDAR X-CV M+S G057H	B B A 69 - -	C1

AO = Audi Original Designation
 AOE = Audi Original Extended
 (Runflat Tyre Characteristics)
 RO1 = Audi quattro specification
 ★ = BMW specification
 I ★ = BMW specification
 MO = Mercedes Original
 MOE = Mercedes Original Extended
 (Runflat Tyre Characteristics)
 M+S = Mud + Snow (Legal Classification may vary from country to country)
 OE = Original Equipment

SF = SILENTFOAM: This polyurethane foam aims to reduce tyre cavity resonance
 RSC = Runflat System Component
 RF = Reinforced
 XL = Extra Load
 ZPS = Zero Pressure System (Runflat Tyre Characteristics)
 (F) = Front Axle
 (R) = Rear Axle
 - = Tyre does not bear this pictogram
 Category = C1: Passenger car tyres,
 C2: Light commercial vehicle tyres,
 C3: Heavy commercial vehicle tyres

MAZDA

(2/2)

Model	Tyre Description	Tyre Brand Name		C
Mazda 2	185/60R14 82H	ASPEC A300	C B B 69 - -	C1
	185/65R15 88T	BluEarth-GT AE51D	B B A 67 - -	C1
Mazda 3	195/65R15 91H	ASPEC A349A	D B B 70 - -	C1
	205/60R16 92V	BluEarth-GT AE51E	B C A 67 - -	C1
MX-5	195/50R16 84V	ADVAN Sport V105	D C B 71 - -	C1

MERCEDES-BENZ

(1/2)

Model	Tyre Description	Tyre Brand Name		C
A-Class (W176)	225/45R17 91W	ADVAN Sport V105 MO	D B B 71 - -	C1
	225/45R17 91V	C.drive2 AC02A MO	D C B 70 - -	C1
	205/55R16 91V	C.drive2 AC02A MO	C C B 70 - -	C1
	205/55R16 91H	C.drive2 AC02A MO	C C B 70 - -	C1
B-Class (W246)	225/45R17 91W	ADVAN Sport V105 MO	D B B 71 - -	C1
	225/45R17 91V	C.drive2 AC02A MO	D C B 70 - -	C1
	205/55R16 91V	C.drive2 AC02A MO	C C B 70 - -	C1
	205/55R16 91H	C.drive2 AC02A MO	C C B 70 - -	C1
C-Class (BR205)	225/50R17 94W	ADVAN Sport V105 MO	B B B 71 - -	C1
	(F)225/45R18 95Y	XL/RF ADVAN Sport V105 MO	C B B 72 - -	C1
	(R)245/40R18 97Y	XL/RF ADVAN Sport V105 MO	C B B 72 - -	C1
C-Class (BR204)	(R)245/40R17 91W	ADVAN Sport V105 MO	D A B 71 - -	C1
		ADVAN Sport V103S MO	D B B 71 - -	C1
		ADVAN Sport V105 MO	D B B 71 - -	C1
	205/55R16 91W	ADVAN Sport V105 MO	C B B 71 - -	C1
	(F)205/55R16 91W	ADVAN Sport V105 MO	C B B 71 - -	C1
	(R)225/50R16 92W	ADVAN Sport V105 MO	D B B 71 - -	C1
		ADVAN Sport V103S MO	D B B 71 - -	C1
	205/55R16 91V	ADVAN Sport V105 MO	C B B 71 - -	C1
CLA (C117)	225/45R17 91W	ADVAN Sport V105 MO	D B B 71 - -	C1
CLS (C218)	(R)285/35R18 97Y	ADVAN Sport V105 MO	D A B 73 - -	C1
	255/40R18 99Y	XL/RF ADVAN Sport V105 MO	D A B 73 - -	C1
CLS-Shooting Brake (X218)	(R)285/35R18 97Y	ADVAN Sport V105 MO	D A B 73 - -	C1
	255/40R18 99Y	XL/RF ADVAN Sport V105 MO	D A B 73 - -	C1
G-Class (BR463)		GEOLANDAR H/T G038G	D D B 70 - -	C1
	265/60R18 110V			
GLA (X156)		C.drive2 AC02A MO	C C B 71 - -	C1
	235/50R18 97V	C.drive2 AC02A ZPS MOE	C C B 71 - -	C1
GLC (X253)	235/55R19 101V	ADVAN Sport V105 MO	C B B 71 - -	C1
	235/60R18 103V	ADVAN Sport V105 MO	B B B 71 - -	C1
S-Class (BR222)	245/50R18 100W	ADVAN Sport V105C MO	B A B 71 - -	C1

See section "Technical Information" about how to read the Tyre Code.
 For information about the start and end date of production of these tyres, information about the tyre type identifier and further technical aspects, please refer to the official product information sheet, which can be provided to you by your tyre dealer. A link to the public part of the European product database for Energy Labelling (EPREL), where you can access the product information sheet and the EU tyre label, is also provided via the YOKOHAMA website (www.yokohama.eu).



Fuel Efficiency Class

The fuel efficiency class ranges from A (most efficient) to E (least efficient). A top class tyre has less rolling resistance and therefore requires less energy to move the vehicle. This translates into lower energy costs (fossil fuels or electricity).



Wet Grip Class

The wet grip describes a tyre's performance under wet conditions and its classes ranges as well from A (shorter braking distance on wet asphalt) to E (longest).



External Rolling Noise Class and Measured Value (dB)

The external rolling noise class ranges from A (less noise outside the vehicle) to C (highest noise). The external rolling noise, caused by tyres, is measured in decibels. This noise is different from the "cavity noise", which is the noise transmitted from the rims to the interior of the car.



Under the new regulation, in addition to the previous tyre label, there are also options for including an icon relating to grip on icy conditions and/or severe snow conditions in the bottom part of the tyre label (next to the external rolling noise pictogram) for tyres which satisfy the minimum snow grip index values or the relevant minimum ice grip index values.

Tyres suitable for severe snow conditions bear the snow grip pictogram ("3 Peak Mountain Snowflake") or "alpine" symbol that is also present on the sidewall of such tyres. Nordic winter tyres (tyre class C1) for use on iced surfaces will feature a symbol (ice grip pictogram) that represents an ice stalagmite.

Original Equipment



MERCEDES-BENZ (2/2)

Model	Tyre Description	Tyre Brand Name						C
S-Class Coupé (C217)	245/50R18 100W	ADVAN Sport V105C MO	B	A	B 71	-	-	C1
SL (R231)	(R)285/30ZR19 (98Y)	XL/RF ADVAN Sport V105 MO	D	A	B 74	-	-	C1
	255/35ZR19 (96Y)	XL/RF ADVAN Sport V105 MO	D	A	B 73	-	-	C1
	(R)285/35R18 97Y	ADVAN Sport V105+ MO	D	A	B 73	-	-	C1
SLC (R172)	225/45R17 91W	ADVAN Sport V105 MO	D	B	B 71	-	-	C1
	(R)245/40R17 91W	ADVAN Sport V105 MO	D	A	B 71	-	-	C1
	225/50R16 92W	ADVAN Sport V105 MO	D	B	B 71	-	-	C1
	225/50R16 92V	ADVAN Sport V105 MO	D	B	B 71	-	-	C1
	205/55R16 91W	ADVAN Sport V105 MO	C	B	B 71	-	-	C1
	205/55R16 91V	ADVAN Sport V105 MO	C	B	B 71	-	-	C1

MERCEDES-AMG

Model	Tyre Description	Tyre Brand Name						C
CLE (BR236)	(F)265/40ZR19 (102Y)	XL/RF ADVAN Sport V107C MO1	B	A	B 73	-	-	C1
	(R)295/35ZR19 (104Y)	XL/RF ADVAN Sport V107C MO1	B	A	B 73	-	-	C1
CLS (C257)	(F)245/35ZR20 (95Y)	XL/RF ADVAN Sport V105 MO	D	A	B 72	-	-	C1
	(R)275/30ZR20 (97Y)	XL/RF ADVAN Sport V105 MO	D	A	B 73	-	-	C1
	(F)245/40ZR19 (98Y)	XL/RF ADVAN Sport V105 MO	D	A	B 72	-	-	C1
	(R)275/35ZR19 (100Y)	XL/RF ADVAN Sport V105 MO	D	A	B 73	-	-	C1
E-Class (BR213)	(F)245/35ZR20 (95Y)	XL/RF ADVAN Sport V105 MO	D	A	B 72	-	-	C1
	(R)275/30ZR20 (97Y)	XL/RF ADVAN Sport V105 MO	D	A	B 73	-	-	C1
	(F)245/40ZR19 (98Y)	XL/RF ADVAN Sport V105 MO	D	A	B 72	-	-	C1
	(R)275/35ZR19 (100Y)	XL/RF ADVAN Sport V105 MO	D	A	B 73	-	-	C1
E-Class (BR214)	(F)245/45R19 102V	XL/RF ADVAN WINTER V907 MO1A	C	C	A 68	✓	-	C1
	(R)275/40R19 105V	XL/RF ADVAN WINTER V907 MO1A	C	C	B 73	✓	-	C1
EQS (BR297)	275/35R22 104Y	XL/RF ADVAN Sport V107C MO1 SF	C	A	B 72	-	-	C1
G-Class (W463)	275/50R20 113W	XL/RF ADVAN S.T. V802 MO	D	B	B 72	-	-	C1
	285/55R18 113V	AVS S/T type-1 V801	D	D	B 74	-	-	C1
GLA (H247)	235/50ZR19 99Y	ADVAN Sport V107F MO1	C	A	B 70	-	-	C1
	255/35ZR21 98Y	XL/RF ADVAN Sport V107F MO1	D	A	A 70	-	-	C1
GLB (X247)	255/35ZR21 98Y	XL/RF ADVAN Sport V107F MO1	D	A	A 70	-	-	C1
GLE (W167)	(F)285/40ZR22 110Y	XL/RF ADVAN Sport V107C MO1	C	A	A 71	-	-	C1
	(R)325/35ZR22 114Y	XL/RF ADVAN Sport V107D MO1	C	A	A 72	-	-	C1
	275/50ZR20 113Y	XL/RF ADVAN Sport V107D MO1	C	A	B 72	-	-	C1
GLS (X167)	(F)285/45ZR22 114Y	XL/RF ADVAN Sport V107C MO1	C	A	A 71	-	-	C1
	(R)325/40ZR22 114Y	ADVAN Sport V107D MO1	C	A	B 72	-	-	C1
ML (W164)	295/40ZR20 106Y	ADVAN Sport V103A MO	D	B	B 74	-	-	C1

MITSUBISHI (1/2)

Model	Tyre Description	Tyre Brand Name						C
ASX	215/60R17 96H	ASPEC A349A	D	C	B 71	-	-	C1
	215/65R16 98H	ASPEC A349A	C	C	B 71	-	-	C1
Eclipse Cross	225/55R18 98H	BluEarth E70BZ	D	B	B 70	-	-	C1
Eclipse Cross PHEV	225/55R18 98H	BluEarth E70CZ	C	B	B 70	-	-	C1
Grandis	215/55R17 94V	ASPEC A349A	D	C	B 71	-	-	C1
Lancer	215/45R18 89W	ADVAN A10A	D	C	B 71	-	-	C1
	205/60R16 92H	ADVAN A460L	D	C	B 71	-	-	C1
Space Star	175/55R15 77V	BluEarth A34LZ	D	B	B 69	-	-	C1
	165/65R14 79S	BluEarth A34LZ	C	C	B 68	-	-	C1

MITSUBISHI (2/2)

Model	Tyre Description	Tyre Brand Name						C
Outlander	235/60R18 103H	GEOLANDAR X-CV G99B	B	B	B 70	-	-	C1
		GEOLANDAR G033	C	B	B 71	-	-	C1
	215/70R16 100H	GEOLANDAR G033V	C	B	B 71	-	-	C1
Outlander PHEV	225/55R18 98H	BluEarth E70BZ	D	B	B 70	-	-	C1
Pajero	265/65R17 112H	GEOLANDAR G902	D	C	B 72	-	-	C1
	265/70R16 112S	GEOLANDAR G039	C	C	B 72	-	-	C1
	235/80R16 109S	GEOLANDAR G039	D	C	B 70	-	-	C1
Pajero Sport	265/70R16 112S	GEOLANDAR G94CV	C	C	B 72	-	-	C1
Triton	265/60R18 110H	GEOLANDAR G94BV	B	C	B 72	-	-	C1

NISSAN

Model	Tyre Description	Tyre Brand Name						C
JUKE	215/55R17 94V	YOKOHAMA dB E70N	D	B	B 70	-	-	C1
	205/60R16 92H	YOKOHAMA dB E70L	D	B	B 70	-	-	C1
Murano	235/55R20 102V	ADVAN Sport V103B	D	B	B 71	-	-	C1
X-Trail		GEOLANDAR G91AV	C	D	B 71	-	-	C1
	225/65R17 102H	GEOLANDAR G98EV	C	C	B 70	-	-	C1
	235/60R18 103H	GEOLANDAR X-CV G99A	B	B	B 69	-	-	C1
370 Z	(F)225/50R18 95W	ADVAN Sport V103E	D	B	B 71	-	-	C1
	(R)245/45R18 96W	ADVAN Sport V103F	D	B	B 71	-	-	C1

PEUGEOT

Model	Tyre Description	Tyre Brand Name						C
4008	215/70R16 100H	GEOLANDAR G033	C	B	B 71	-	-	C1

PORSCHE (1/2)

Model	Tyre Description	Tyre Brand Name						C
718 Boxster (982)	(F)235/40ZR19 (92Y)	ADVAN Sport V105 N0	D	A	B 71	-	-	C1
	(R)265/40ZR19 (98Y)	ADVAN Sport V105W N0	D	A	B 72	-	-	C1
718 Cayman (982)	(F)235/40ZR19 (92Y)	ADVAN Sport V105 N0	D	A	B 71	-	-	C1
	(R)265/40ZR19 (98Y)	ADVAN Sport V105W N0	D	A	B 72	-	-	C1
911 Carrera (991 II)	(F)235/40ZR19 (92Y)	ADVAN Sport V105 N0	D	A	B 71	-	-	C1
	(R)295/35ZR19 (100Y)	ADVAN Sport V105E N0	D	A	B 74	-	-	C1
911 Carrera 4 (997)	(R)295/35ZR18 (99Y)	ADVAN Sport V103S N-1	D	B	B 74	-	-	C1
Panamera (G1 II)	(F)255/40ZR20 (101Y)	XL/RF ADVAN Sport V105 N-0	D	A	B 73	-	-	C1
	(R)295/35ZR20 (105Y)	XL/RF ADVAN Sport V105W N-0	D	A	B 74	-	-	C1
Panamera (G2)	(F)275/40ZR20 (106Y)	XL/RF ADVAN Sport V105 N0	C	A	A 70	-	-	C1
	(R)315/35ZR20 (110Y)	XL/RF ADVAN Sport V105W N0	C	A	A 70	-	-	C1
Cayenne (E1)	275/40R20 106Y	XL/RF ADVAN Sport V103B N-0	D	B	B 73	-	-	C1
	275/45R19 108Y	XL/RF ADVAN Sport V103B N-0	D	B	B 73	-	-	C1
Cayenne (E1 II)	295/35R21 107Y	XL/RF ADVAN Sport V103B N-0	D	B	B 74	-	-	C1
	275/40R20 106Y	XL/RF ADVAN Sport V103B N-0	D	B	B 73	-	-	C1
	275/45R19 108Y	XL/RF ADVAN Sport V103B N-0	D	B	B 73	-	-	C1
Cayenne (E2)	295/35R21 107Y	XL/RF ADVAN Sport V103B N-1	D	B	B 74	-	-	C1
	275/45R20 110Y	XL/RF ADVAN Sport V103H N-0	D	B	B 73	-	-	C1
Cayenne (E2 II)	295/35R21 107Y	XL/RF ADVAN Sport V105T N-2	D	A	B 74	-	-	C1
	275/45R20 110Y	XL/RF ADVAN Sport V103H N-0	D	B	B 73	-	-	C1

ADVAN V61A



BluEarth-GT AE51B



GEOLANDAR G91F



For information about the EU Tyre Label, Tyre labelling data, Original Equipment and further technical details of our OE Tyres, please see the OE section beneath or refer to the YOKOHAMA website www.yokohama.eu

PORSCHE

(2/2)

Model	Tyre Description	Tyre Brand Name		C
Cayenne (E3PA)	(F)285/40ZR22 (110Y)	XL/RF ADVAN Sport V107D NC0	C B A 69 - -	C1
	(R)315/35ZR22 (111Y)	XL/RF ADVAN Sport V107D NC0	C A A 72 - -	C1
Cayenne (E3)	(F)285/35ZR22 (106Y)	XL/RF ADVAN Sport V105 N0	C A B 74 - -	C1
	(R)315/30ZR22 (107Y)	XL/RF ADVAN Sport V105E N0	C A B 73 - -	C1

RENAULT

Model	Tyre Description	Tyre Brand Name		C
Twingo GT	(F)185/45R17 78H	BluEarth-A AE50	D C B 68 - -	C1
	(R)205/40R17 80H	BluEarth-A AE50	D C A 67 - -	C1

SMART

Model	Tyre Description	Tyre Brand Name		C
fortwo BRABUS (BR453)	(F)185/50R16 81H	BluEarth-A AE50	D C B 68 - -	C1
	(R)205/40R17 80H	BluEarth-A AE50	D C A 67 - -	C1
forfour BRABUS (BR453)	(F)185/45R17 78H	BluEarth-A AE50	D C B 68 - -	C1
	(R)205/40R17 80H	BluEarth-A AE50	D C A 67 - -	C1
forfour BRABUS (BR451)	(F)175/50R16 77T	S.drive AS01 MO	D C B 69 - -	C1
	(R)225/35R17 86Y	XL/RF S.drive AS01	D C B 72 - -	C1

SUBARU

Model	Tyre Description	Tyre Brand Name		C
BR-Z	205/55R16 91V	YOKOHAMA dB E70JC	D C B 70 - -	C1
Crosstrek	225/60R17 99H	GEOLANDAR G91L	B B B 70 - -	C1
Forester	215/55R17 94V	GEOLANDAR G900A	D C B 71 - -	C1
	225/55R17 97V	GEOLANDAR G95A	C C B 71 - -	C1
	225/60R17 99V	GEOLANDAR G91F	B C B 71 - -	C1
	215/60R16 95V	GEOLANDAR G900	D C B 71 - -	C1
	225/40R18 92W	XL/RF ADVAN Sport V105G	D B B 72 - -	C1
Impreza	225/40R18 92W	XL/RF ADVAN Sport V105F	D B B 72 - -	C1
	205/50R17 89V	ADVAN A10E	D C B 71 - -	C1
	205/55R16 89V	ASPEC A349A	C C B 71 - -	C1
	205/55R16 91V	YOKOHAMA dB E70JC	D C B 70 - -	C1
	215/50R17 91V	ADVAN A10E	C D B 71 - -	C1
Outback	225/55R18 98V	YOKOHAMA dB E70B	D C B 70 - -	C1
	215/55R17 94V	GEOLANDAR G900A	D C B 71 - -	C1
	225/60R17 99V	GEOLANDAR G95A	C C B 71 - -	C1
	225/65R17 102H	GEOLANDAR G98C	B C B 71 - -	C1
	235/60R18 103H	ADVAN V61A	A B A 68 - -	C1
WRX (STI)	245/35R19 89W	ADVAN Sport V105G	D B B 70 - -	C1
XV	225/55R17 97V	GEOLANDAR G95A	C C B 71 - -	C1
	225/60R17 99H	BluEarth E70GZ	B C B 70 - -	C1

MO	= Mercedes Original	XL	= Extra Load
MO1	= Mercedes Original	RF	= Reinforced
MO1A	= Mercedes Original	(F)	= Front Axle
N0	= Porsche specification	(R)	= Rear Axle
N-0	= Porsche specification	√	= Tyre bears this pictogram
N-1	= Porsche specification	-	= Tyre does not bear this pictogram
N-2	= Porsche specification	Category = C1:	Passenger car tyres,
NC0	= Porsche specification	C2:	Light commercial vehicle tyres,
SF	= SILENTFOAM: This polyurethane foam aims to reduce tyre cavity resonance	C3:	Heavy commercial vehicle tyres

See section "Technical Information" about how to read the Tyre Code.
For information about the start and end date of production of these tyres, information about the tyre type identifier and further technical aspects, please refer to the official product information sheet, which can be provided to you by your tyre dealer. A link to the public part of the European product database for Energy Labelling (EPREL), where you can access the product information sheet and the EU tyre label, is also provided via the YOKOHAMA website (www.yokohama.eu).

SUZUKI

Model	Tyre Description	Tyre Brand Name		C
Swift	175/65R15 84H	BluEarth AE01J	B C B 69 - -	C1
		BluEarth AE01J	C C B 69 - -	C1
	185/55R16 83V	BluEarth-Es ES32	A B A 67 - -	C1
Swift Sport	195/50R16 84V	ADVAN A13C	D C A 66 - -	C1
Across	235/55R19 101V	AVID GT S35	B C B 70 - -	C1

TOYOTA

Model	Tyre Description	Tyre Brand Name		C
Auris/Corolla	205/55R16 91V	ADVAN A460J	D C B 71 - -	C1
	195/65R15 91H	ASPEC A349G	D C B 70 - -	C1
bZ4X	235/60R18 103H	ADVAN V61A	A B A 68 - -	C1
Camry	215/55R17 93V	YOKOHAMA dB E70B	D C B 70 - -	C1
	215/60R16 95V	YOKOHAMA dB E70B	D B B 70 - -	C1
	215/55R17 94V	BluEarth GT AE51B	C C A 67 - -	C1
	205/65R16 95H	BluEarth GT AE51A	C C A 67 - -	C1
GT86	205/55R16 91V	YOKOHAMA dB E70JC	D C B 70 - -	C1
Hiace	235/65R16C 115/113T	BluEarth-Van RY55A	C B A 69 - -	C2
Land Cruiser 200	285/60R18 116V	GEOLANDAR G94BV	C C B 73 - -	C1
	285/65R17 116H	GEOLANDAR G94B	C C B 73 - -	C1
Land Cruiser 300	265/65R18 114V	GEOLANDAR A/T G31A	C C B 72 - -	C1
Land Cruiser Prado	265/60R20 112H	GEOLANDAR X-CV G057M	B C B 72 - -	C1
	265/65R18 114V	GEOLANDAR A/T G31A	C C B 72 - -	C1
	245/70R18 110H	GEOLANDAR X-CV G057N	B C B 69 - -	C1
Prius	195/60R17 90H	BluEarth-FE AE30D	A C A 67 - -	C1
	195/50R19 88H	BluEarth-GT AE51J	C A B 71 - -	C1
	215/45R17 87W	BluEarth E70WZ	D C B 70 - -	C1
		BluEarth GT AE51G	C C A 68 - -	C1
Prius+	205/60R16 92V	ADVAN dB V551V	C B B 71 - -	C1
RAV 4	235/55R18 100H	GEOLANDAR G91AV	C D B 71 - -	C1
	225/65R17 102H	GEOLANDAR G91AV	C D B 71 - -	C1
	235/55R19 101V	AVID GT S35	B C B 70 - -	C1
Urban Cruiser	195/60R16 89H	YOKOHAMA dB E70E	C C B 70 - -	C1
Yaris	205/45R17 84W	YOKOHAMA dB E70D	D C B 70 - -	C1
	195/50R16 84V	YOKOHAMA dB E70C	D C B 70 - -	C1
Hilux	265/65R17 112S	GEOLANDAR A/T G94CV	B B B 72 - -	C1
		GEOLANDAR A/T G94DV	B B B 72 - -	C1

VOLKSWAGEN

Model	Tyre Description	Tyre Brand Name		C
Touareg	275/40R20 106Y	XL/RF ADVAN Sport V103B N-0	D B B 73 - -	C1
	275/45R19 108Y	XL/RF ADVAN Sport V103B N-0	D B B 73 - -	C1



Fuel Efficiency Class

The fuel efficiency class ranges from A (most efficient) to E (least efficient). A top class tyre has less rolling resistance and therefore requires less energy to move the vehicle. This translates into lower energy costs (fossil fuels or electricity).



Wet Grip Class

The wet grip describes a tyre's performance under wet conditions and its classes ranges as well from A (shorter braking distance on wet asphalt) to E (longest).



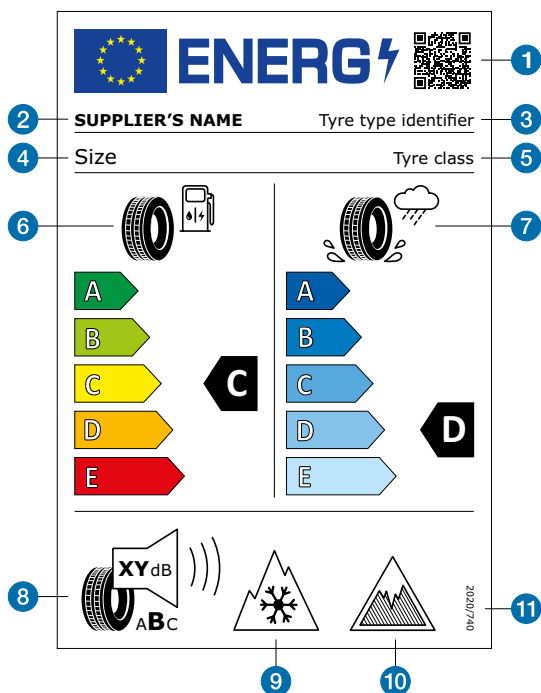
External Rolling Noise Class and Measured Value (dB)

The external rolling noise class ranges from A (less noise outside the vehicle) to C (highest noise). The external rolling noise, caused by tyres, is measured in decibels. This noise is different from the "cavity noise", which is the noise transmitted from the rims to the interior of the car.

Under the new regulation, in addition to the previous tyre label, there are also options for including an icon relating to grip on icy conditions and/or severe snow conditions in the bottom part of the tyre label (next to the external rolling noise pictogram) for tyres which satisfy the minimum snow grip index values or the relevant minimum ice grip index values.



Tyres suitable for severe snow conditions bear the snow grip pictogram ("3 Peak Mountain Snowflake") or "alpine" symbol that is also present on the sidewall of such tyres. Nordic winter tyres (tyre class C1) for use on iced surfaces will feature a symbol (ice grip pictogram) that represents an ice slatagmite.



Since 2012 the EU Tyre Energy Label provides a clear and common classification of tyre performance for rolling resistance, braking on wet surfaces and external noise. The labels help consumers make informed decisions when they are buying tyres as they can easily set their priority choice based on the parameters.

Regulation (EC) No 1222/2009 first introduced the obligation of placing car and van tyres on the EU market with a sticker showing the label. That regulation was repealed and replaced by Regulation (EU) 2020/740 with start of application on 1 May 2021. It established a framework for the provision of harmonised information on tyre parameters through labelling to allow end-users to make an informed decision when purchasing tyres, for the purpose of increasing economic and environmental efficiency of road transport by promoting fuel-efficient, safe tyres with low noise levels.

Tyres are no longer allowed in classes F and G for rolling resistance and for wet grip, which is why the new scale has only 5 classes (A to E). The new energy symbols better suggest that the fuel efficiency is applicable to both internal combustion vehicles and to electric ones. In the bottom part, the external rolling noise class is always indicated, including the measured value of external noise level in decibels.

- | | | |
|--|--|--|
| 1 QR Code | 5 Tyre class: i.e. C1, C2 or C3 | 8 External rolling noise pictogram, value (expressed in dB and rounded to the nearest integer) and performance class |
| 2 Trade name or trademark of the supplier | 6 Fuel efficiency pictogram, scale and performance class | 9 Snow grip pictogram |
| 3 Tyre type identifier = Article number in case of YOKOHAMA | 7 Wet grip pictogram, scale and performance class | 10 Ice grip pictogram (C1 tyres only) |
| 4 Tyre size designation, load capacity index and speed category symbol | | 11 The serial number of this Regulation: "2020/740" |



Fuel Efficiency Class

The fuel efficiency class ranges from A (most efficient) to E (least efficient). A top class tyre has less rolling resistance and therefore requires less energy to move the vehicle. This translates into lower energy costs (fossil fuels or electricity).



Wet Grip Class

The wet grip describes a tyre's performance under wet conditions and its classes ranges as well from A (shorter braking distance on wet asphalt) to E (longest).



External Rolling Noise Class and Measured Value (dB)

The external rolling noise class ranges from A (less noise outside the vehicle) to C (highest noise). The external rolling noise, caused by tyres, is measured in decibels. This noise is different from the "cavity noise", which is the noise transmitted from the rims to the interior of the car.

Under the new regulation, in addition to the previous tyre label, there are also options for including an icon relating to grip on icy conditions and/or severe snow conditions in the bottom part of the tyre label (next to the external rolling noise pictogram) for tyres which satisfy the minimum snow grip index values or the relevant minimum ice grip index values.



Tyres suitable for severe snow conditions bear the snow grip pictogram ("3 Peak Mountain Snowflake") or "alpine" symbol that is also present on the sidewall of such tyres. Nordic winter tyres (tyre class C1) for use on iced surfaces will feature a symbol (ice grip pictogram) that represents an ice stalagmite.

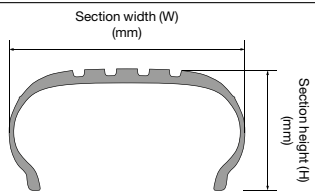
The QR code, to read with a smartphone or other suitable reader, is intended to provide this and additional information for each individual tyre type identifier via a link to the public part of the new European product database for Energy Labelling (EPREL). A link to this database is also provided via the YOKOHAMA website (www.yokohama.eu). You can also get the information of the database in printed form from your tyre dealer.

Other components of the label are the trade name or the trade mark of the supplier, the tyre type identifier, the tyre size designation, the load-capacity index and the speed category symbol, the tyre class and furthermore the serial number of the regulation (in the bottom part of the tyre label).

Aspect ratio

The aspect ratio is the ratio of a tyre's section height (H) to its section width (W).

$$\text{Aspect ratio (\%)} = \frac{H}{W} \times 100$$



Speed category symbol

The speed symbol refers to the maximum speed capabilities of the tyre. It is only valid for tyres that are properly inflated and loaded within their assigned load index.

Speed category symbol	Speed (km/h)
N	140
P	150
Q	160
R	170
S	180
T	190
H	210
V	240
W	270
Y	300
(Y)	over 300

Load-capacity index

The load index is the maximum load-carrying capacity of a tyre under a specific condition.

LI	kg	LI	kg	LI	kg
61	257	81	462	101	825
62	265	82	475	102	850
63	272	83	487	103	875
64	280	84	500	104	900
65	290	85	515	105	925
66	300	86	530	106	950
67	307	87	545	107	975
68	315	88	560	108	1000
69	325	89	580	109	1030
70	335	90	600	110	1060
71	345	91	615	111	1090
72	355	92	630	112	1120
73	365	93	650	113	1150
74	375	94	670	114	1180
75	387	95	690	115	1215
76	400	96	710	116	1250
77	412	97	730	117	1285
78	425	98	750	118	1320
79	437	99	775	119	1360
80	450	100	800	120	1400
				121	1450
				122	1500
				123	1550

Reinforced (Extra Load) Indication

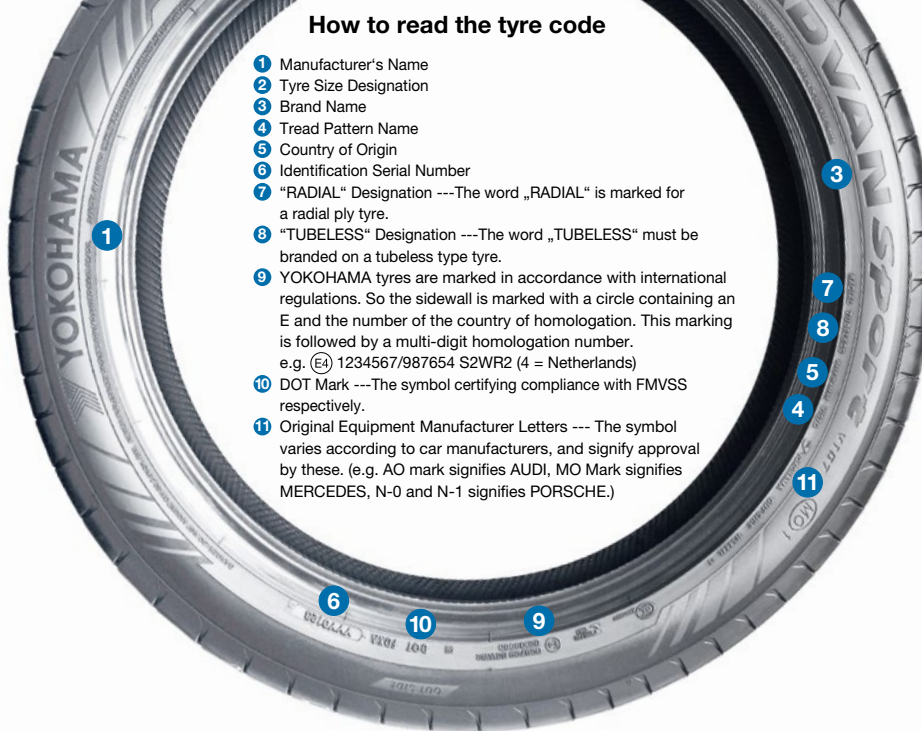
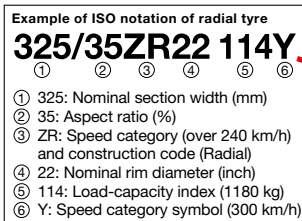
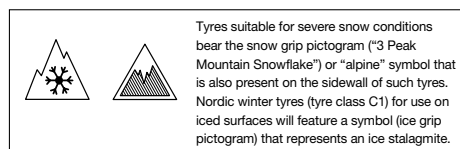
Passenger car tyres designed for loads and inflation pressures higher than the standard version.

Tyre rotation

Tyre rotation is the regular practice of changing the position of each tyre on the car to minimise abnormal (or uneven) tread wear, which may cause:

1. Abnormal vibration ("shimmy")
2. Tyre noise
3. Decreased riding comfort
4. Shorter tyre life

Note: We recommend that you rotate your tyres immediately if you recognise any of the above-mentioned conditions (especially on your front tyres).



Sample tyre for explanation

- Never mount a tyre on a rim that is damaged or which has been repaired by welding or brazing.
- Never inflate beyond 275 kPa (2.75 bar, 40 psi) to seat beads.
- Tyre inflation should be done in a safety cage.
- Do not mix different tyre size designations or constructions on the same axle, except for limited use of temporary spare tyres.
- Outer diameter of wheel should be the same as inner diameter of tyre.
- Make sure to follow instructions in the car owner's manual or on the vehicle tyre information placard in the car to maintain proper tyre pressure (Particularly driving on a highway and/or when carrying heavy loads).
- Never bleed or reduce air pressure when tyres are hot from driving.
- Over- or under-inflation is dangerous and could lead to accidents or tyre damage.
- Check tyre inflation pressure (including spare tyre) at least once a month and before every long trip.
- Stones, gravel and other foreign objects stuck in the tyre treads may damage the tyre. Remove foreign objects from the tyre treads.
- Tyre should only be mounted by professionally trained persons.
- Objects in the road such as potholes, glass, metal, rocks, wood debris, kerbstones and such, which could damage a tyre should be safely avoided.
- To preserve traffic safety and tyre life, YOKOHAMA recommends driving safely and avoiding hard acceleration, braking or cornering in unnecessary situations.
- If you feel the car is unstable or feel any unusual noises or vibrations, stop your car in a safe place and inspect

your tyres. Even if no visible defects are found, drive slowly and ask your tyre dealer to inspect your tyres as soon as possible.

The local regulations for the proper usage of Car Tyres may differ from country to country. Please make sure to check foreign regulations carefully, before going abroad.

To preserve traffic safety, YOKOHAMA recommends driving substantially slower under adverse weather or road conditions.

Fuel saving and road safety depend heavily on the behaviour of drivers and in particular on the following: eco driving can significantly reduce fuel consumption; tyre pressure needs to be regularly checked to optimise fuel efficiency and wet grip; stopping distances must always be respected.

Ice grip tyres are specifically designed for road surfaces covered with ice and compact snow, and should only be used in very severe climate conditions (e.g. cold temperatures). Using ice grip tyres in less severe climate condition (e.g. wet conditions or warmer temperatures) could result in sub-optimal performance, in particular for wet grip, handling and wear.

Never use a tyre under the following conditions and replace tyres immediately:

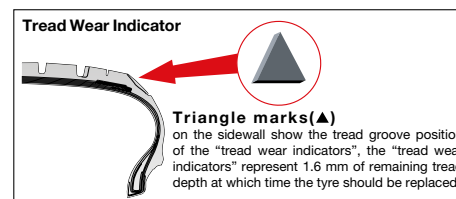
- If the tread has worn to the tread wear indicator.
- If breaks in the fabric appear.
- If cords or wires are exposed.

Storage of steel belted radial tyres:

- Keep your tyres away from direct sunlight and locations with high temperature, high moisture, heavy electrical machinery, welders etc.
- Tyres should be preferably stored in a cool, dry, and dark room with a controlled environment.

Important notice for use of Runflat tyre (ZPS)

- A vehicle must be equipped with a tyre pressure monitoring system.
- After a low pressure warning has been indicated:
 - do not exceed 80 km/h (50 mph).
 - do not travel more than 80 km (50 miles).
 - do not re-inflate after run flat operation and do not repair.



Constructions and specifications are subject to change with or without notice.

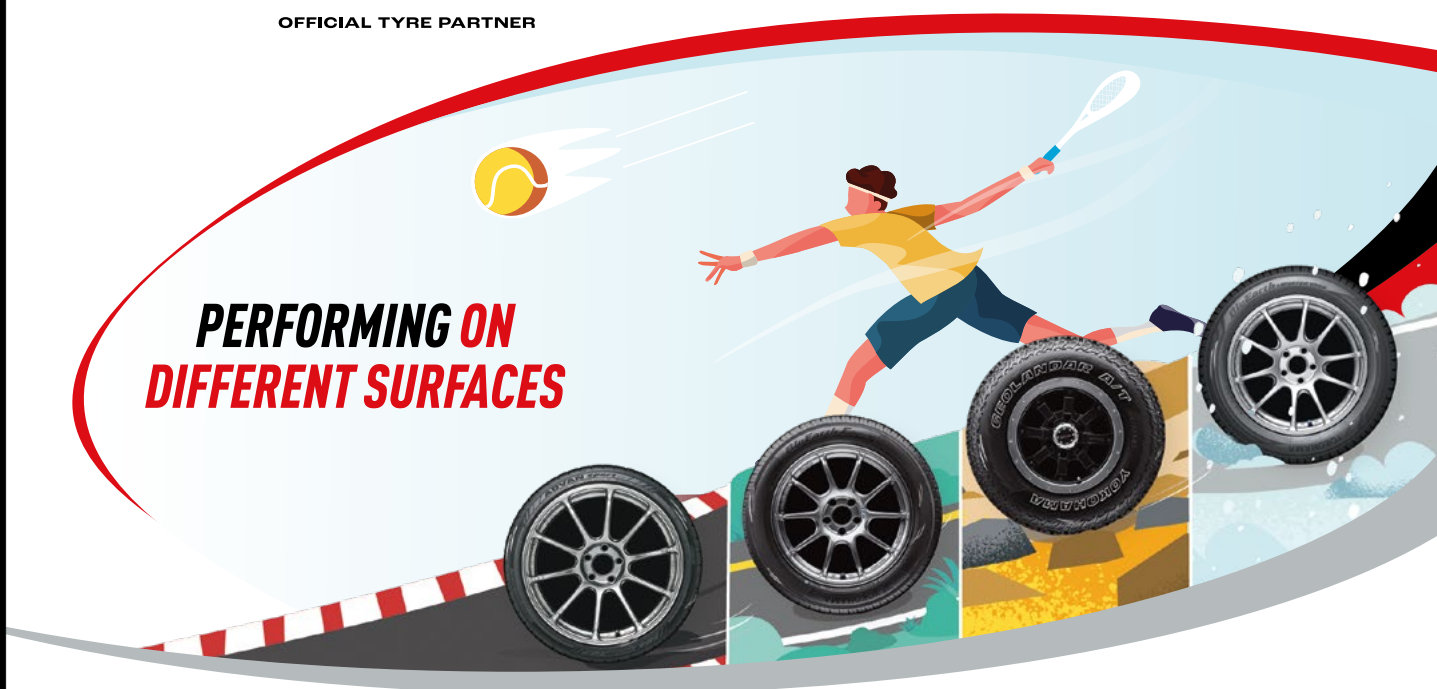
For information about the EU Tyre Label, tyre labelling data and further technical details, see the corresponding sections inside this catalogue or price list respectively. You can also refer to the YOKOHAMA website www.yokohama.eu (not for country specific product and size availability).

As the availability of products and sizes differs from country to country, please ask your local dealer or distributor for detailed information about the specific range, labeling and the technical parameters of the available YOKOHAMA tyres.

General (not country specific) information about this data, can be found in the assigned sections of our website www.yokohama.eu



OFFICIAL TYRE PARTNER



ATP TOUR & YOKOHAMA

Break new ground with global Partnership

ATP Tour and YOKOHAMA are proud to announce a new multi-year global partnership, with the premium Japanese tyre manufacturer becoming the ATP Tour's first-ever Official Tyre partner.

Renowned for its fearless commitment to performance, YOKOHAMA will leverage the Tour's year-round platform to bolster its global presence and premium positioning.

For information about the EU Tyre Label, tyre labelling data and further technical details, see the corresponding sections inside this catalogue or price list respectively. You can also refer to the YOKOHAMA website www.yokohama.eu (not for country specific product and size availability).



www.yokohama.eu